



Place:	John Hardin HS 384 WA Jenkins Rd Elizabethtown, KY 42701
Date:	February 29, 2020
Time:	11:00 PM
Directions	See Below
Doors:	Doors will open at approximately at 9:00 AM. Booster sales people from the units that want to display should bring their own tables for use.
Phone Number for day of contest	Brian Ellis 502-475-7291
Contest director	Angie Campbell 859-982-4913
Admission:	\$9.00 Children 6 and under no charge

Unit Managers: It is suggested that you have your unit sign in together at the designated door. Please turn in your Music at guard check in. Back up CDs are recommended. Make sure all CDs are clearly marked. All Music will be downloaded and used for the whole season. Its responsibility to keep your units music updated

- Upon arrival at a contest, unit managers or representatives are to immediately sign in at the registration desk. You can access your judges commentary thru www.competitionsuite.com.
- All performing members and up to eight additional staff members will be admitted at check-in. Each staff person will be stamped for front side. This must be done as a group admission
- All equipment is taken to the assigned area. Make sure to keep your equipment neat and organized in the hallway provided.
- Absolutely no cooking or smoking in any of the buildings that are used for the competition

Visual Recording: TriState does not allow video taping of any unit. It is your responsibility to pass this information on to your parents and students.

as of 2/27/2020

www.tristatemarchingarts.org



Directions to John Hardin High School

From Lexington

- Take Bluegrass Parkway
- Take the first Elizabethtown exit (this will put you **briefly** onto I-65)
- On I-65, take the first Elizabethtown exit. At exit light, turn left onto Mulberry Street
- Get in right hand lane and turn right onto Ring Road (3005). There will be a Wal-Greens Drugstore on the right.
- Proceed on Ring Road (3005) until the US-31W (Dixie Highway) intersection. Turn right onto US-31W (Dixie Highway) by the Wal-Mart Store.
- Proceed on US-31W / at **approximately** the 7th traffic light, turn left onto WA Jenkins Road. There are signs on US-31W (Dixie Highway) that will indicate the direction of John Hardin High School.
- From WA Jenkins Road, John Hardin High School will be on your right. Turn right into main entrance of school. Spectator parking will be the lot at the back of the school / Bus parking will be in the lower level parking lot in the front of the school and in the parking lot at the side of the school. Guard / Percussion staff parking will be at the top lot at the front of the school
- From WA Jenkins Road, John Hardin High School will be on your right. Turn right into main entrance of school. Spectator parking will be the lot at the back of the school / Bus parking will be in the lower level parking lot in the front of the school and in the parking lot at the side of the school. Guard / Percussion staff parking will be at the top lot at the front of the school.

From Louisville:

- Take I-65 South towards Nashville / Elizabethtown
- Once you enter Hardin County, look for the Joe Prather Highway exit
- Exit right onto Joe Prather Highway
- Travel to the end of Joe Prather Highway and turn left at light onto US-31W (Dixie Highway). There will be a McDonalds on your right as you turn at the light.
- Stay on US-31W and turn right onto WA Jenkins Road. There are signs on US-31W (Dixie Highway) that will indicate the direction of John Hardin High School.
- From WA Jenkins Road, John Hardin High School will be on your right. Turn right into main entrance of school. Spectator parking will be the lot at the back of the school / Bus parking will be in the lower level parking lot in the front of the school and in the parking lot at the side of the school. Guard / Percussion staff parking will be at the top lot at the front of the school.

From Western Kentucky Parkway:

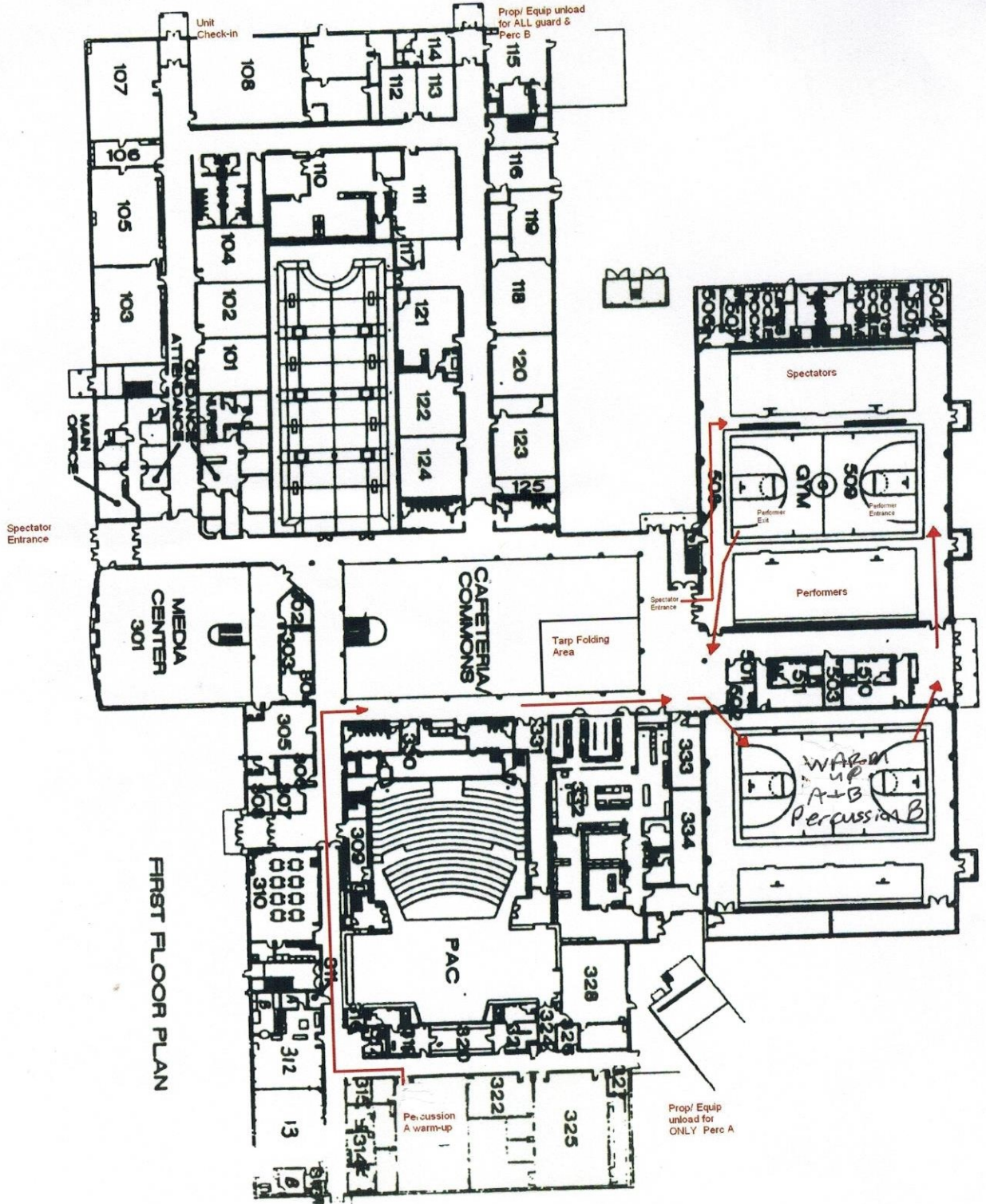
- Take Western Kentucky Parkway towards Elizabethtown
- Take the Elizabethtown US-31W By-Pass Exit (#136). Turn left onto US-31W By-Pass (Follow all signs to Ft. Knox, Elizabethtown Community College, etc.)
- At the end of the By-Pass, turn left at light onto US-31W (Dixie Highway)
- On US-31W (Dixie Highway), turn left onto WA Jenkins Road. There are signs on US-31W (Dixie Highway) that will indicate the direction of John Hardin High School.
- From WA Jenkins Road, John Hardin High School will be on your right. Turn right into main entrance of school. Spectator parking will be the lot at the back of the school / Bus parking will be in the lower level parking lot in the front of the school and in the parking lot at the side of the school. Guard / Percussion staff parking will be at the top lot at the front of the school.

From Bowling Green Area

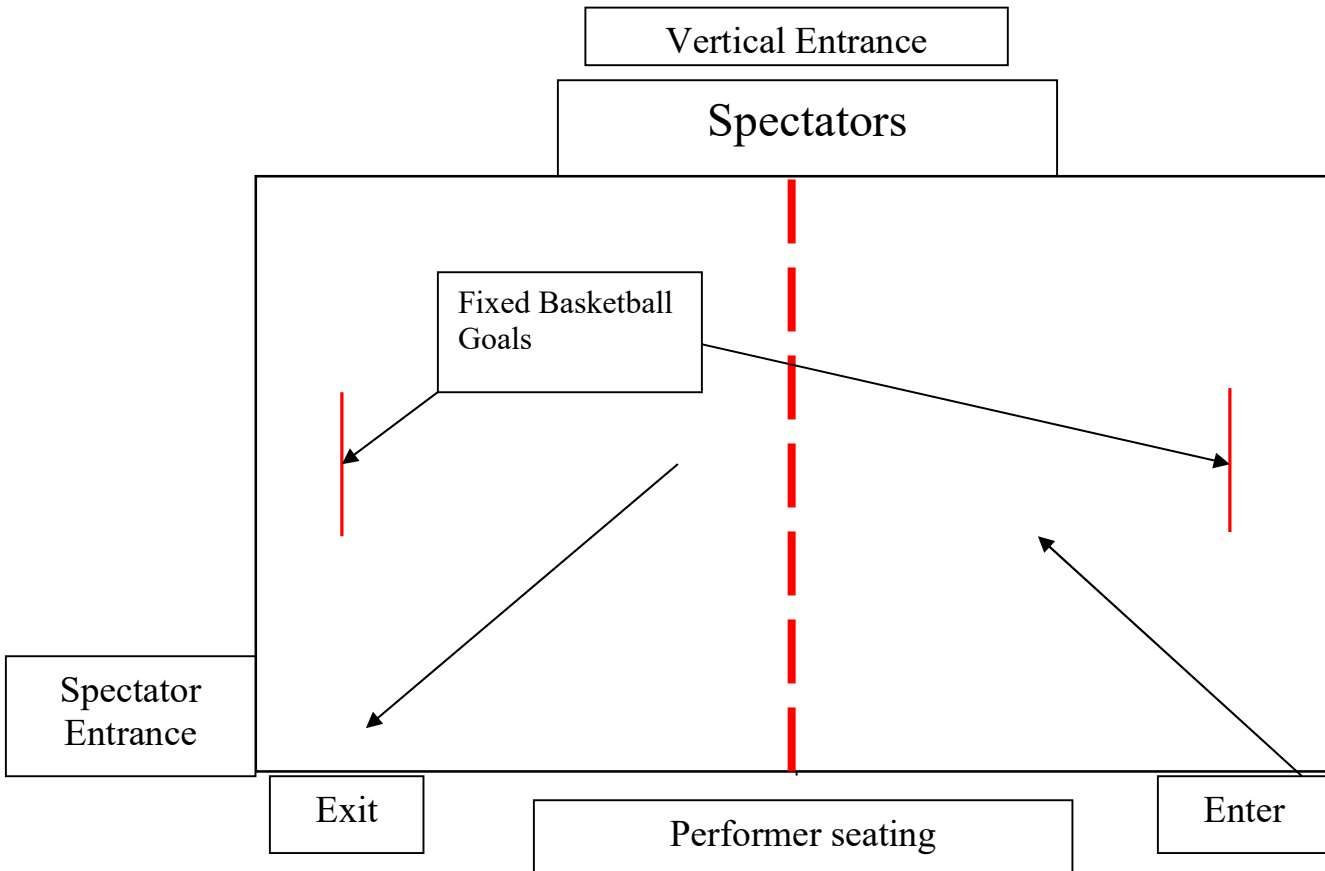
- Take I-65 North towards Elizabethtown / Louisville
- Take Exit 91 and follow signs to US-31W By-Pass (follow signs to Ft. Knox and Elizabethtown Community College)
- Stay on US 31W By-Pass
- At the end of the By-Pass, turn left at light onto US-31W (Dixie Highway)
- On US-31W (Dixie Highway), turn left onto WA Jenkins Road. There are signs on US-31W (Dixie Highway) that will indicate the direction of John Hardin High School.
- From WA Jenkins Road, John Hardin High School will be on your right. Turn right into main entrance of school. Spectator parking will be the lot at the back of the school / Bus parking will be in the lower level parking lot in the front of the school and in the parking lot at the side of the school. Guard / Percussion staff parking will be at the top lot at the front of the school.

as of 2/27/2020

www.tristatemarchingarts.org



as of 2/27/2020



as of 2/27/2020

www.tristatemarchingarts.org