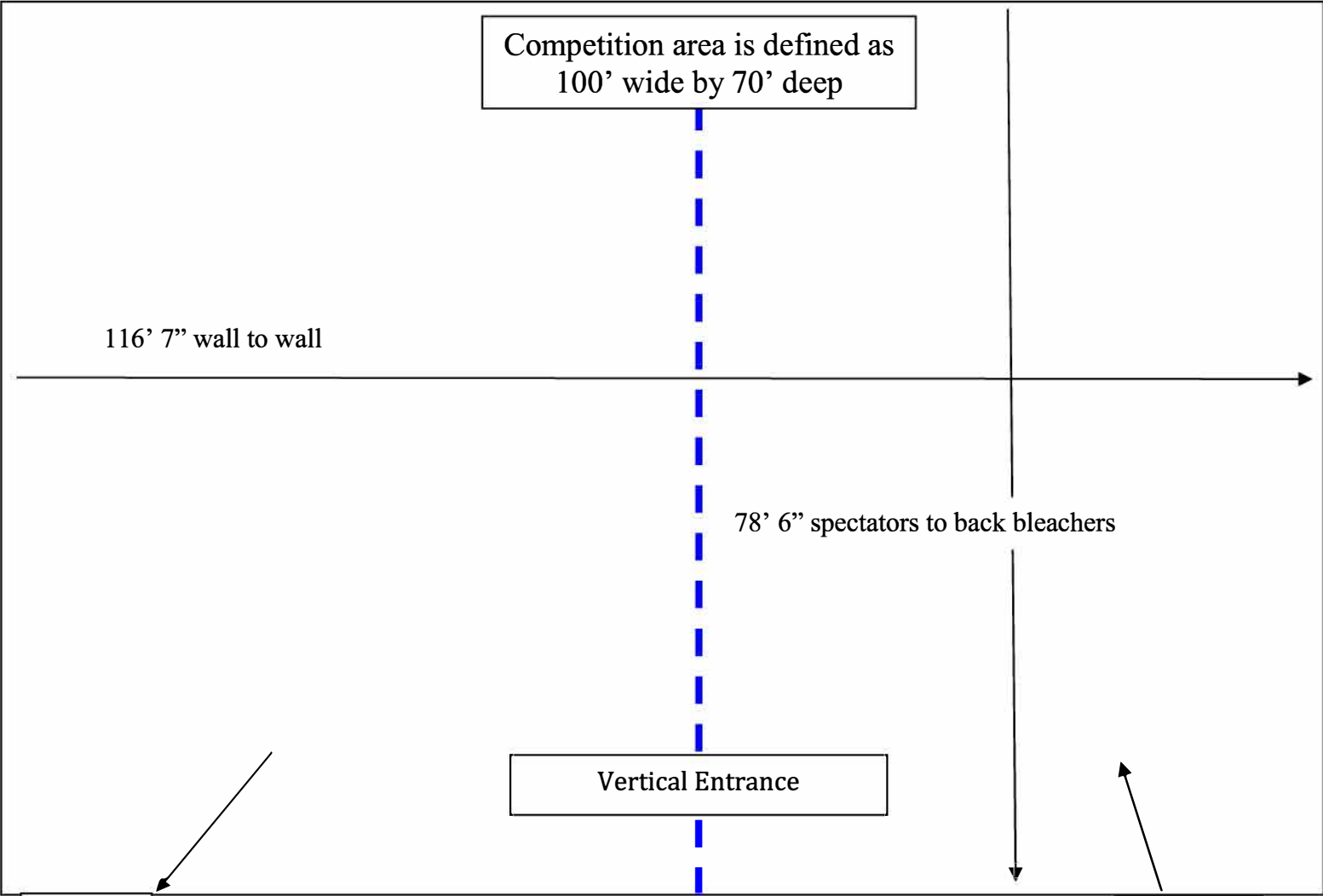


COMPETITION AREA ENTRANCE & EXIT DIAGRAM

SPECTATORS



Competition area is defined as
100' wide by 70' deep

116' 7" wall to wall

78' 6" spectators to back bleachers

Vertical Entrance

Exit

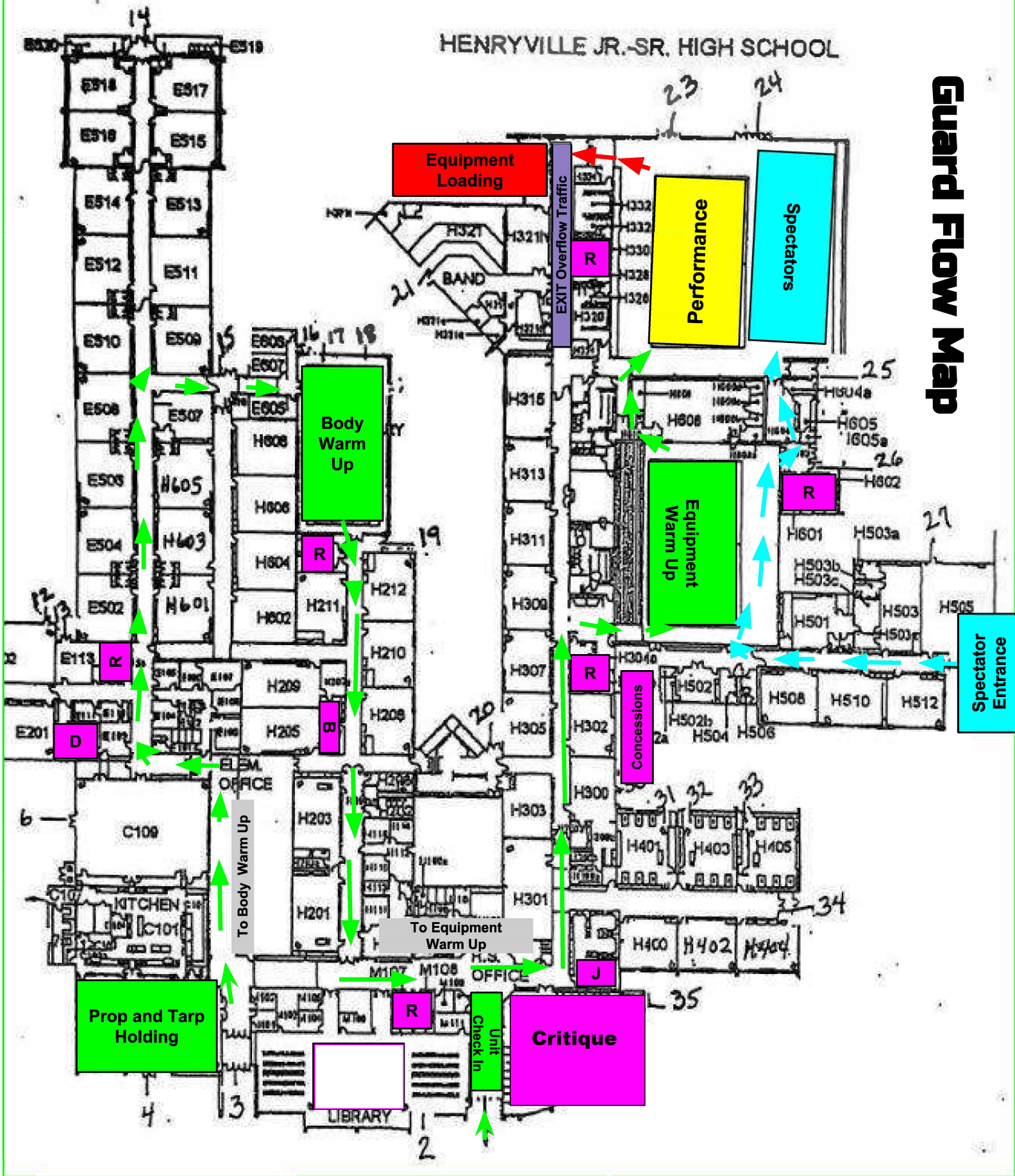
Enter

as of 10/6/2019

www.tristatemarchingarts.org

HENRYVILLE JR.-SR. HIGH SCHOOL

Guard Flow Map



R - Restrooms
 D - Director Hospitality
 B - Bus Driver Hospitality
 J - Judges Hospitality

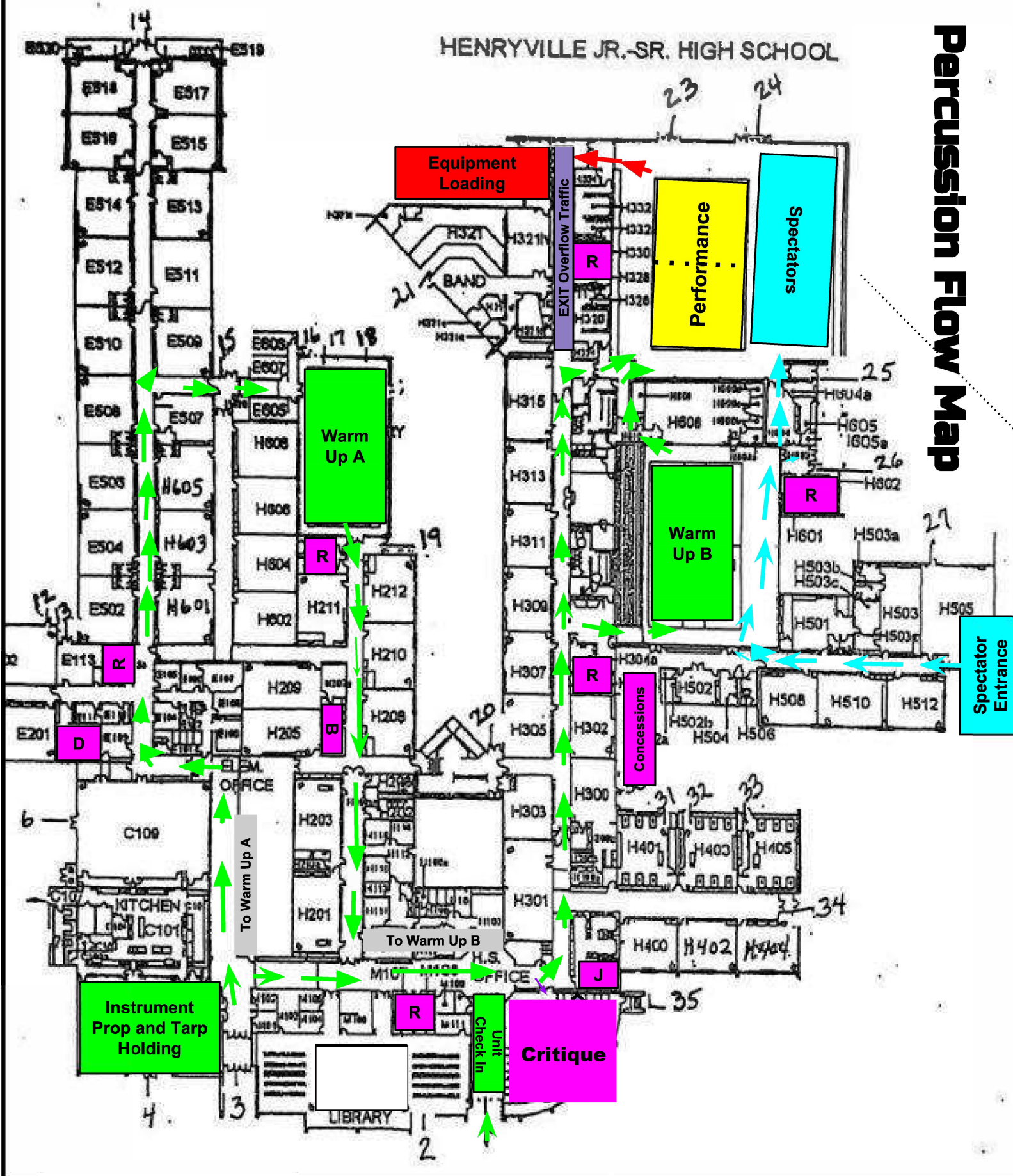
Green = Guard Flow to Warm Up/Performance

Purple = Guard Flow EXIT

Blue = Spectator Flow

HENRYVILLE JR.-SR. HIGH SCHOOL

Percussion Flow Map



R - Restrooms
 D - Director Hospitality
 B - Bus Driver Hospitality
 J - Judges Hospitality

Green = Percussion Flow to Warm Up/Performance

Purple = Percussion Flow EXIT

Blue = Spectator Flow

