



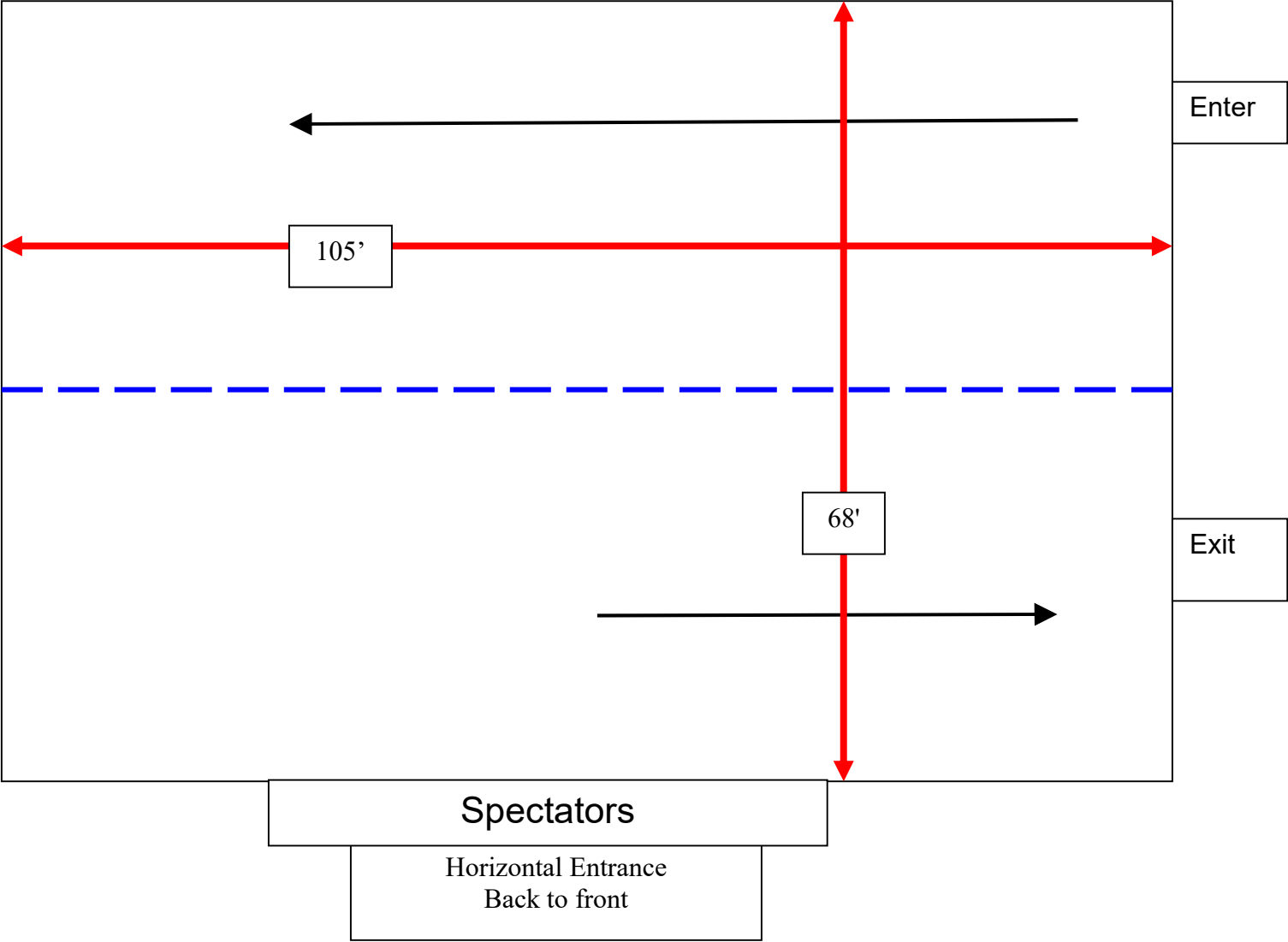
Place:	Ryle High School 10379 US-42, Union KY 41091
Date:	February 29, 2020
Time:	12:00 PM
Directions	Take I-75 to Exit 180 (Florence, Union Exit). Go west on US 42 to Union. You will pass a Kroger store on your left. Go through Union to the traffic light and turn right onto Double Eagle Drive. Go to the stop sign, turn left, and you will see Ryle High School on your left. (Union is approximately 5 miles from exit 180).
Doors:	Doors will open at approximately at 10:00 AM. Booster sales people from the units that want to display should bring their own tables for use. Some tables may be provided if available. Please contact show sponsor. Space is limited. Dana Skulan email danaskulan@gmail.com 859-240-9039
Phone Number for day of contest	Doug Wash 859-816-9699
Contest director	Julie Acheson 859-468-2094
Admission:	\$9.00 Adults, children under 6 no charge.

Unit Managers: It is suggested that you have your unit sign in together at the designated door. Please turn in your Music at guard check in. Back up CDs are recommended. Make sure all CDs are clearly marked. All Music will be downloaded and used for the whole season. Its responsibility to keep your units music updated

- Upon arrival at a contest, unit managers or representatives are to immediately sign in at the registration desk. You can access your judges commentary thru www.competitionsuite.com. It is optional to turn in a Mp3 or jump drive for judges commentary
- All performing members and up to 8 additional staff members will be admitted at check-in. Each staff person will be provided a wristband for front side. This must be done as a group admission
- All equipment is taken to the assigned area. Make sure to keep your equipment neat and organized in the hallway provided.
- Absolutely no cooking or smoking in any of the buildings that are used for the competition

Visual Recording: TriState does not allow video taping of any unit. It is your responsibility to pass this information on to your parents and students.

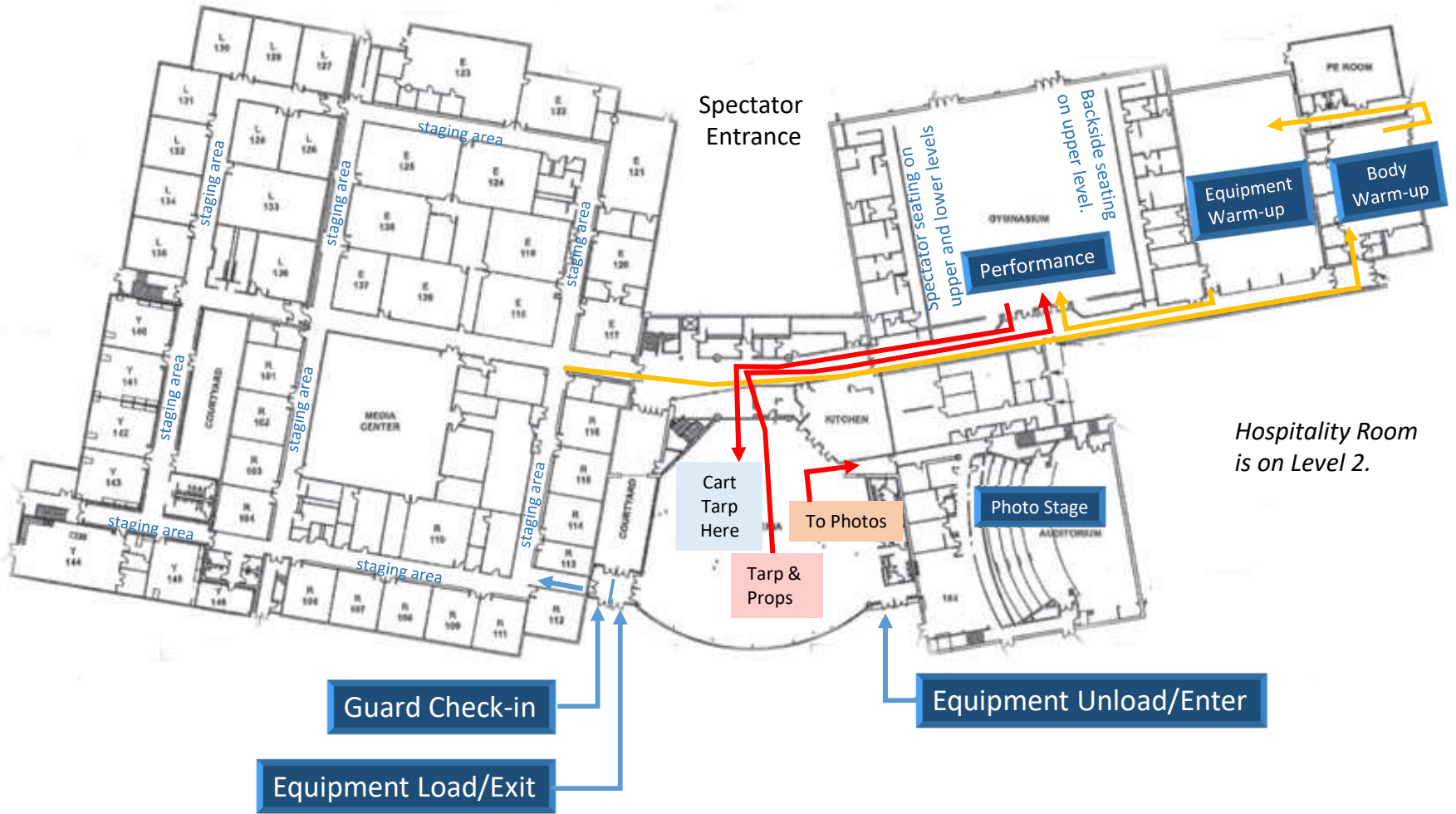
as of 2/12/2020
www.tristatemarchingarts.org





Larry A Ryle High School

Spectator Parking



Hospitality Room is on Level 2.

US Highway 42