

**Unit/Equipment
Entrance**

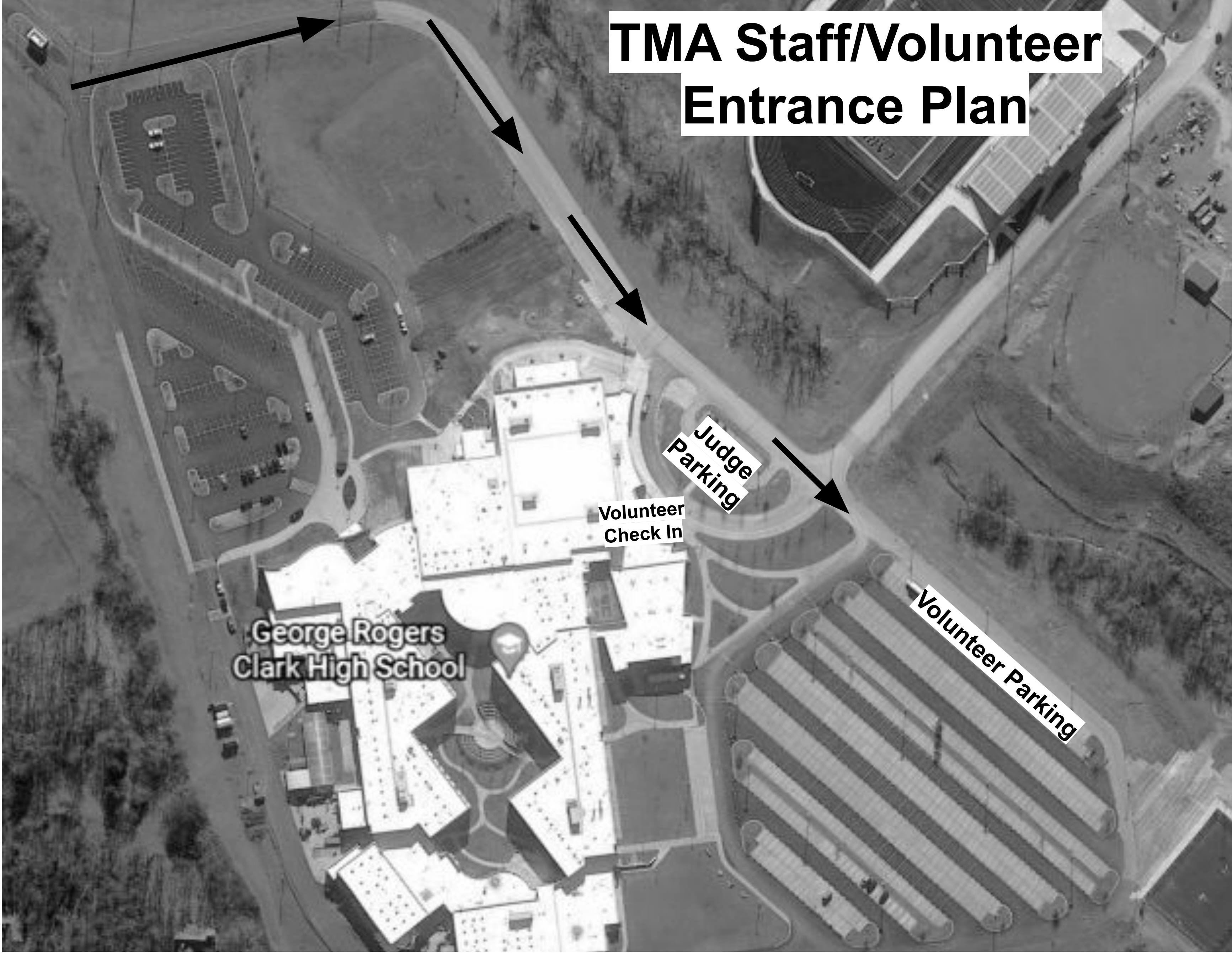
**George Rogers
Clark High School**

**Unit
Check In**

**Unit Parking (Bus, Equipment
Trailers, Staff)**



TMA Staff/Volunteer Entrance Plan

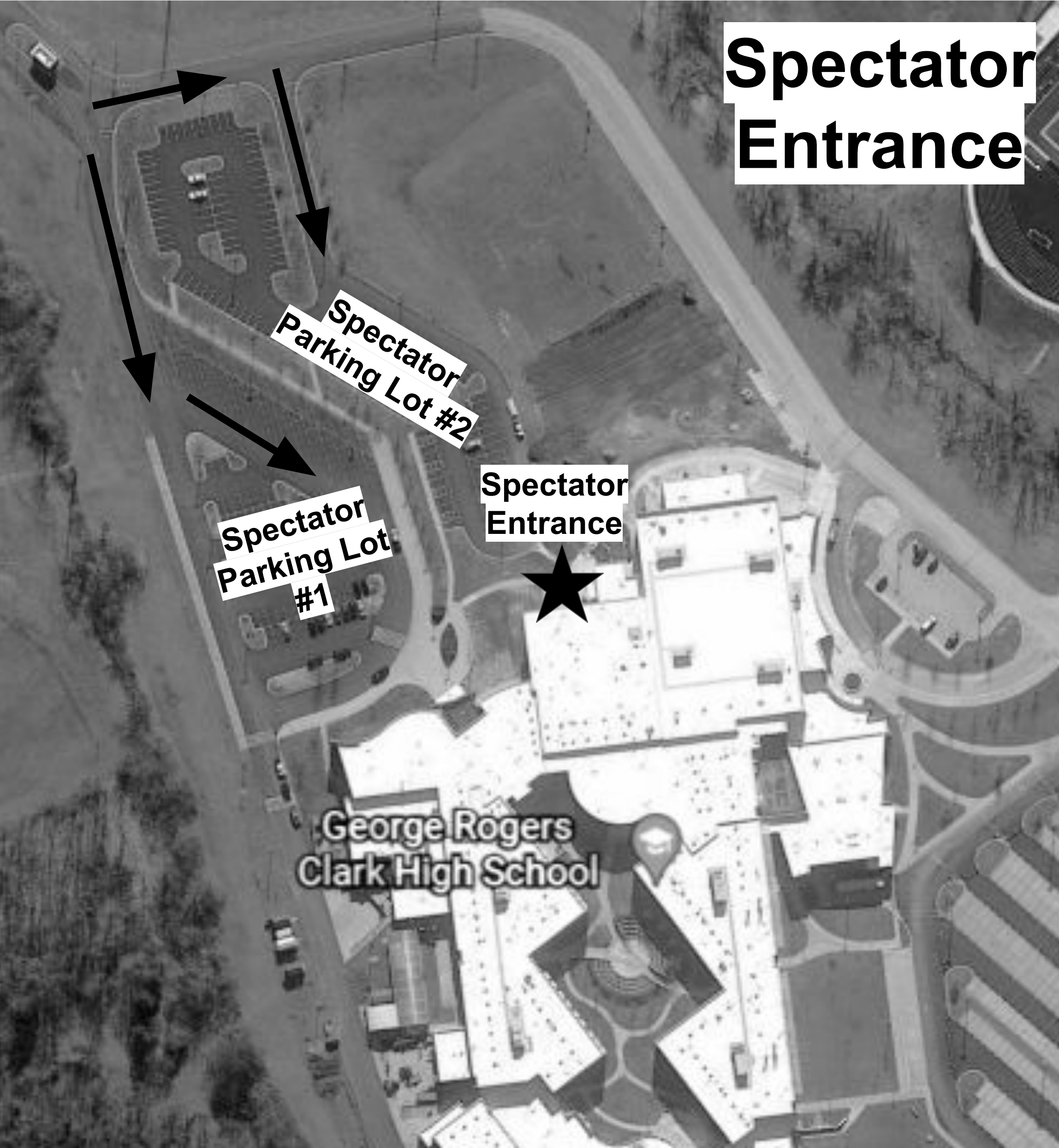


Judge
Parking

Volunteer
Check In

George Rogers
Clark High School

Volunteer Parking



**Spectator
Entrance**

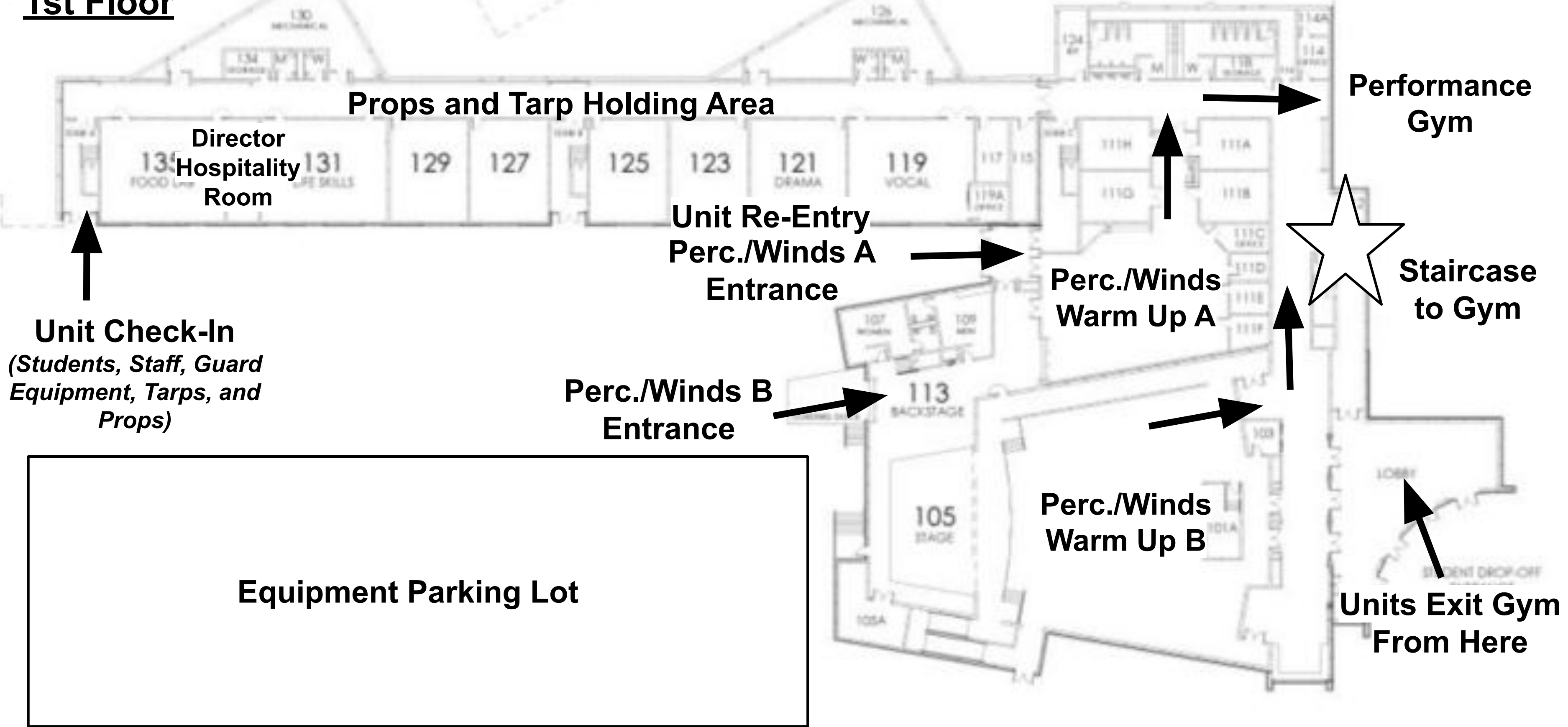
**Spectator
Parking Lot #2**

**Spectator
Parking Lot
#1**

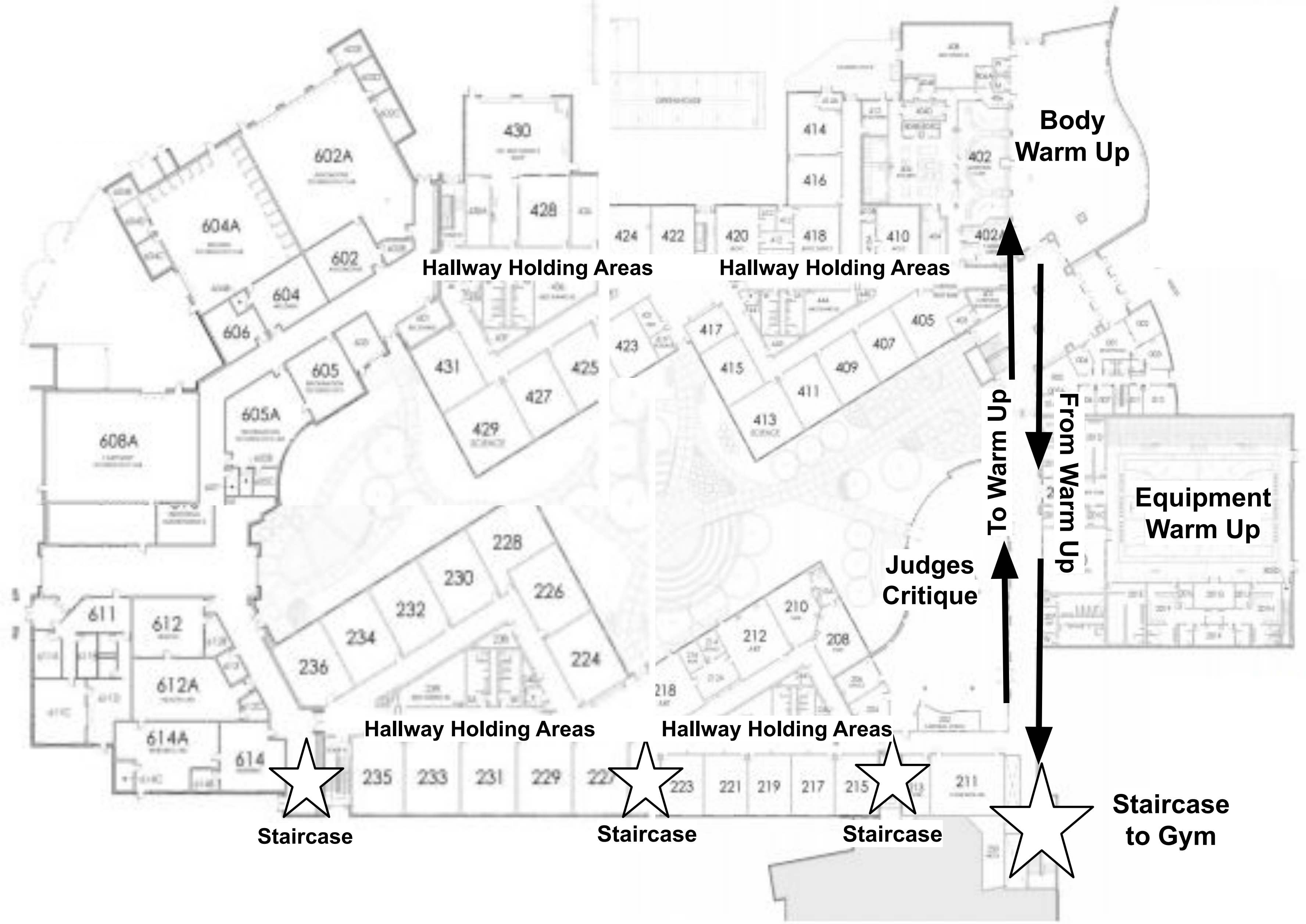
**Spectator
Entrance**

**George Rogers
Clark High School**

1st Floor



2nd Floor



**Body
Warm Up**

Hallway Holding Areas

Hallway Holding Areas

To Warm Up

From Warm Up

**Equipment
Warm Up**

**Judges
Critique**

Hallway Holding Areas

Hallway Holding Areas

Staircase

Staircase

Staircase

**Staircase
to Gym**

3rd Floor



Staircase



Hallway Holding Areas

Hallway Holding Areas

Staircase to Warm Up



Hallway Holding Areas

Hallway Holding Areas

Staircase to Hallway Spot



Staircase



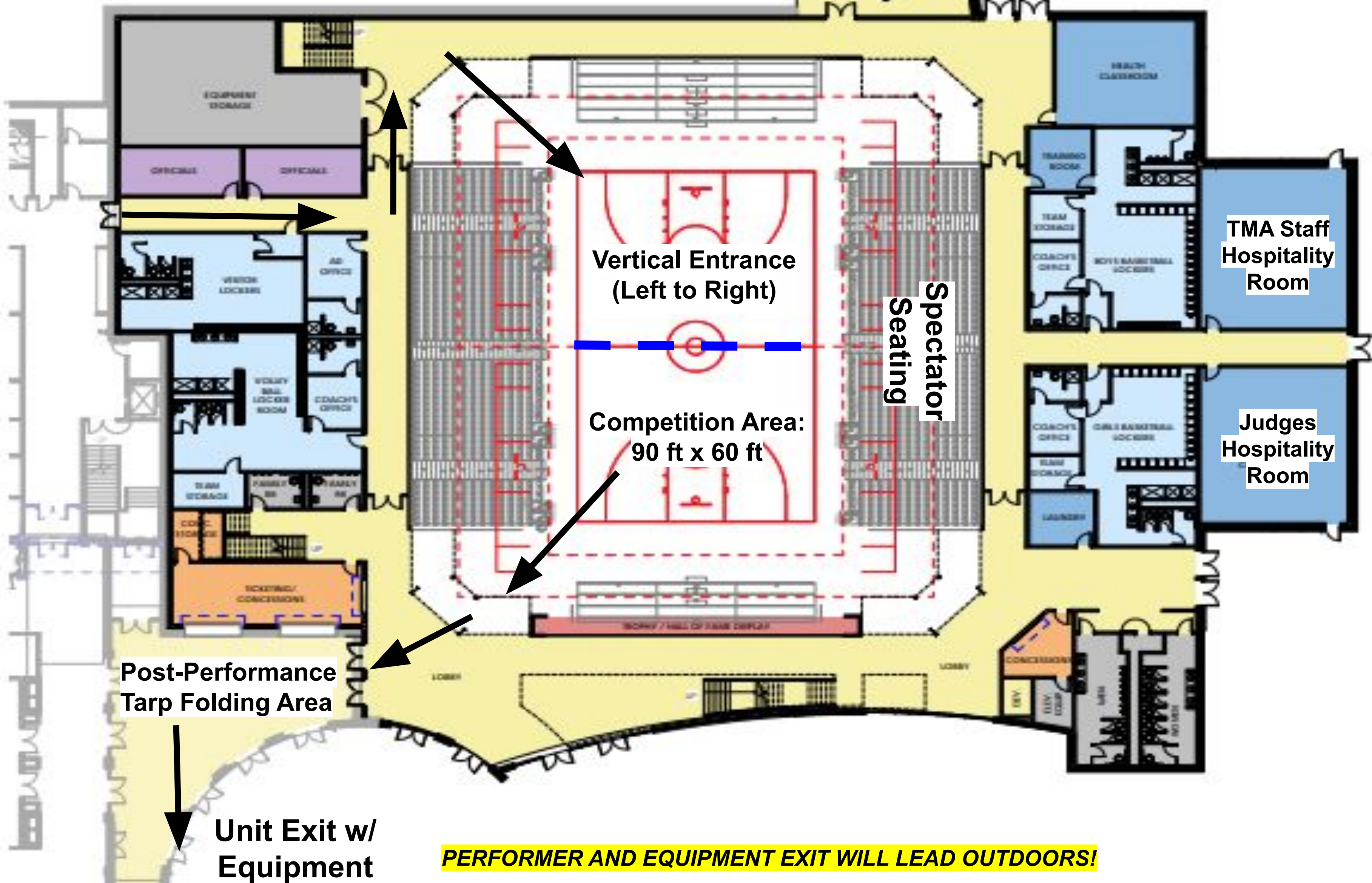
Staircase



Staircase to Warm Up



Gymnasium



Vertical Entrance
(Left to Right)

Competition Area:
90 ft x 60 ft

Spectator
Seating

TMA Staff
Hospitality
Room

Judges
Hospitality
Room

Post-Performance
Tarp Folding Area

Unit Exit w/
Equipment

PERFORMER AND EQUIPMENT EXIT WILL LEAD OUTDOORS!



**Percussion and Winds
Warm Up A**



**Percussion and Winds
Warm Up B**

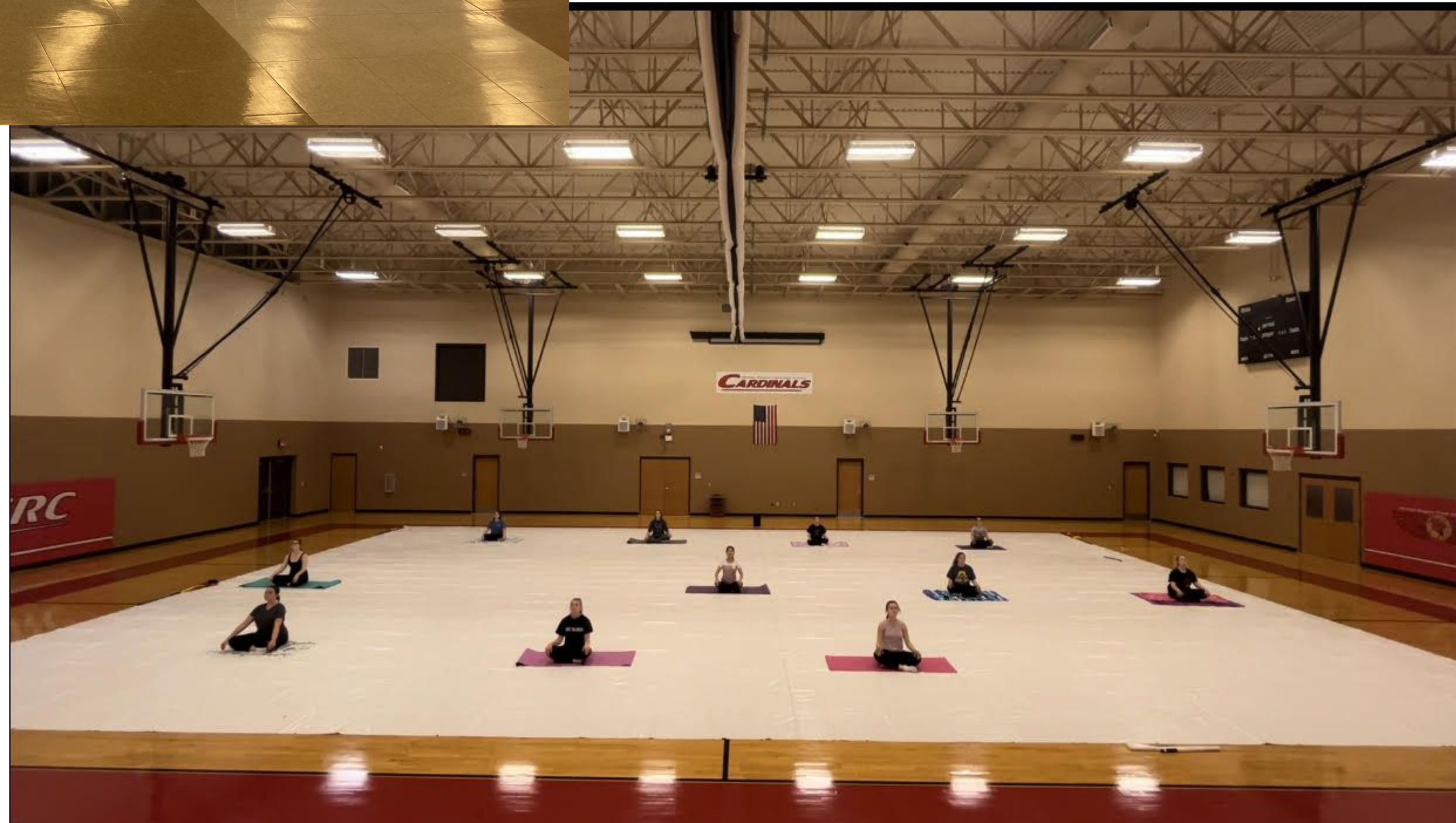




Body Warm Up



Equipment Warm Up





**Equipment Holding Area
(Tarp, Props, Percussion)**

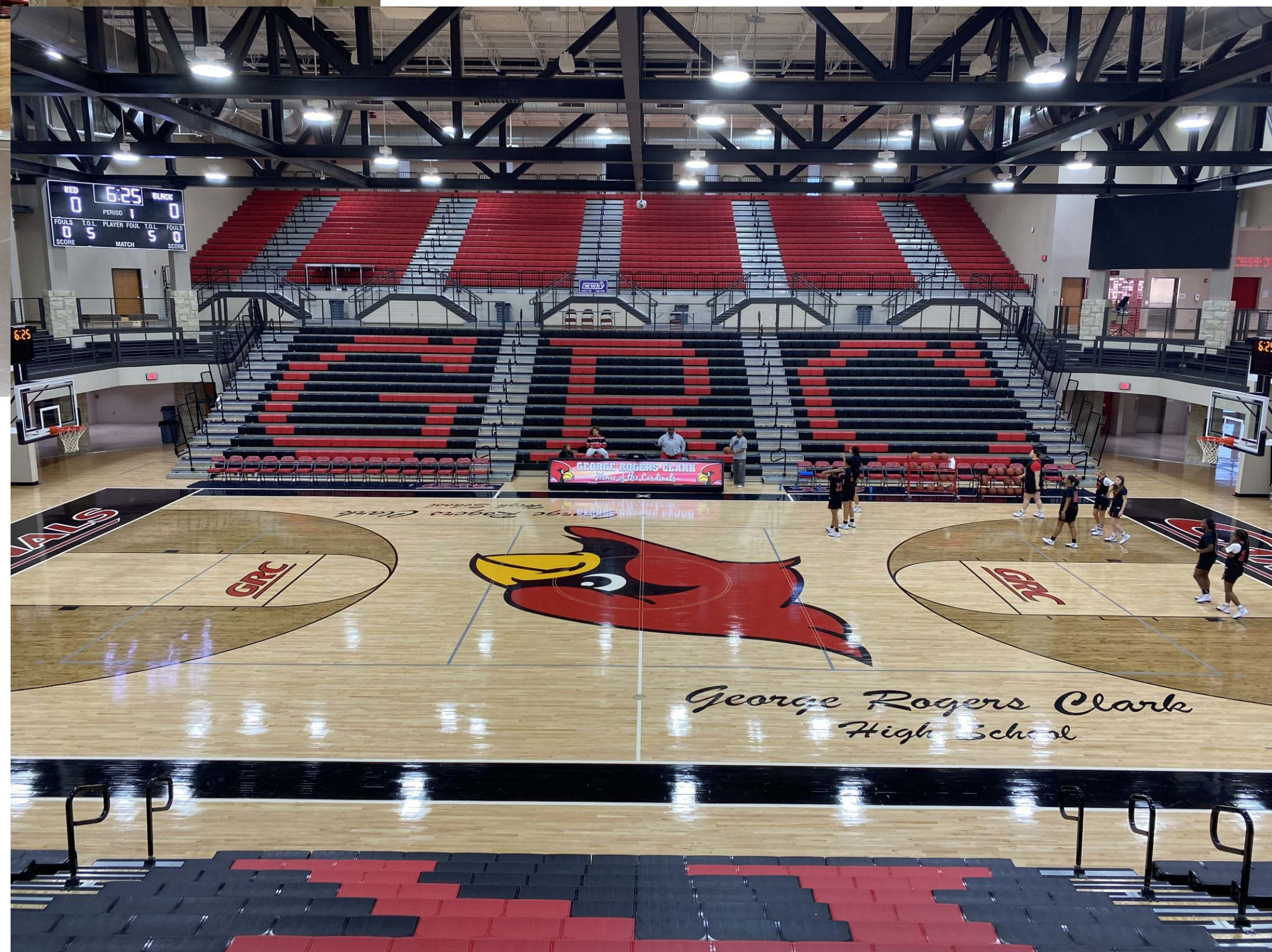


Tarp Refolding Area





**Performance Entrance to
Gymnasium**



**Performer View in
Gymnasium**





Pulled Pork \$3

Jumbo Hot Dog \$2

Popcorn \$2

Chips \$1

(Doritos, Plain Lays, BBQ Lays)

Beef Jerky Stick \$2

Candy \$2

(Skittles, Hershey's, M&M, Snickers, Reese's)

Bottled Drinks \$2

(Coke, Diet Coke, Sprite, Water)

Ale-8 Can \$1



ADMISSION



\$9

Children Free

(5 and under)

