

Participant Entrance (Judge/Unit/Volunteer)



George Rogers
Clark High School

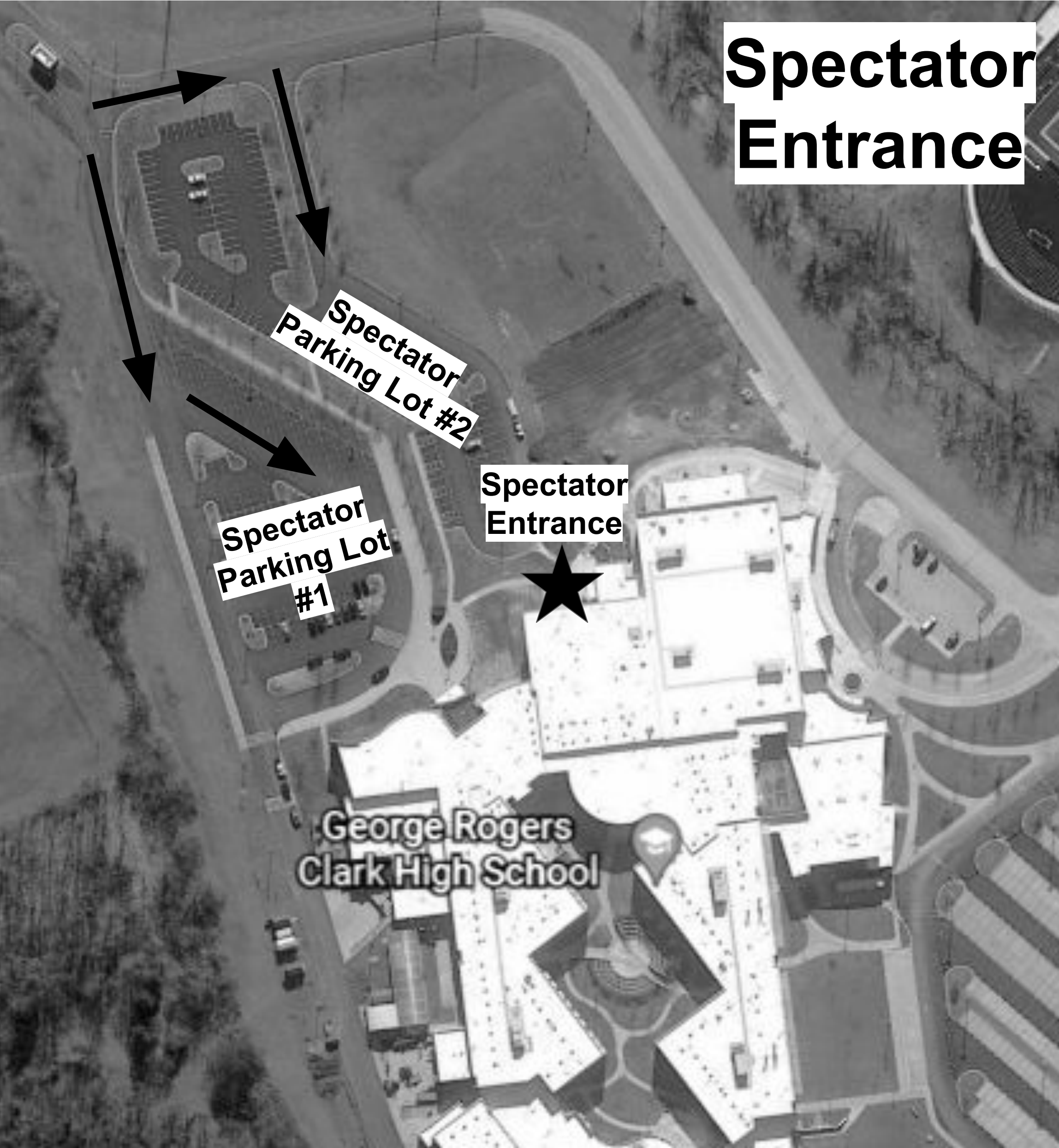
Judge
Parking

Volunteer
Check In

Unit
Check In

Volunteer Parking

Unit Parking (Bus, Equipment
Trailers, Staff)



**Spectator
Entrance**

**Spectator
Parking Lot #2**

**Spectator
Parking Lot
#1**

**Spectator
Entrance**

**George Rogers
Clark High School**



TMA

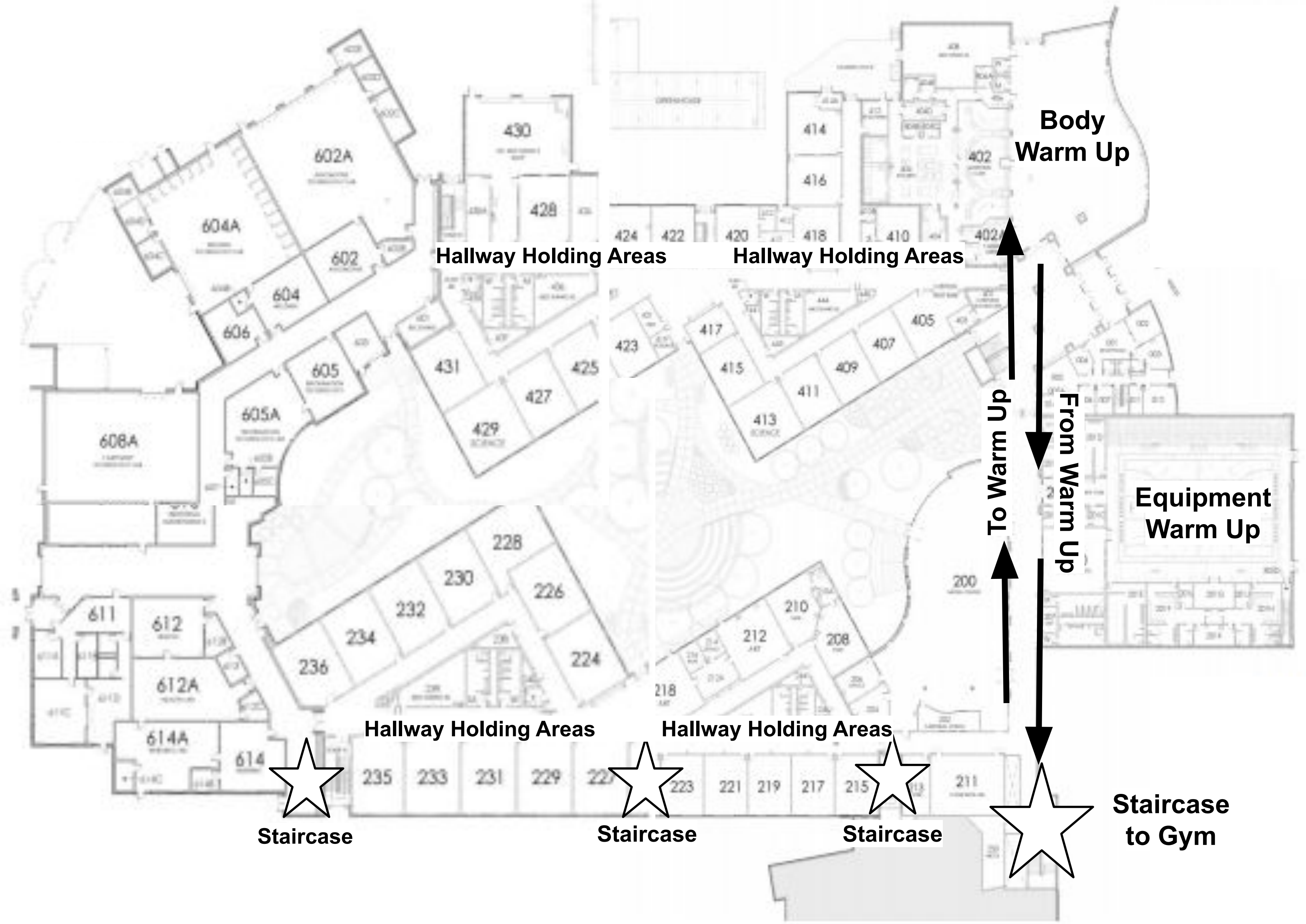


@ GRC

Director's

Packet

2nd Floor



Body Warm Up

Hallway Holding Areas

Hallway Holding Areas

To Warm Up

From Warm Up

Equipment Warm Up

Staircase

Staircase

Staircase

Staircase to Gym

3rd Floor



Staircase



Hallway Holding Areas

Hallway Holding Areas

Staircase to Warm Up



Hallway Holding Areas

Hallway Holding Areas

Staircase to Hallway Spot



Staircase



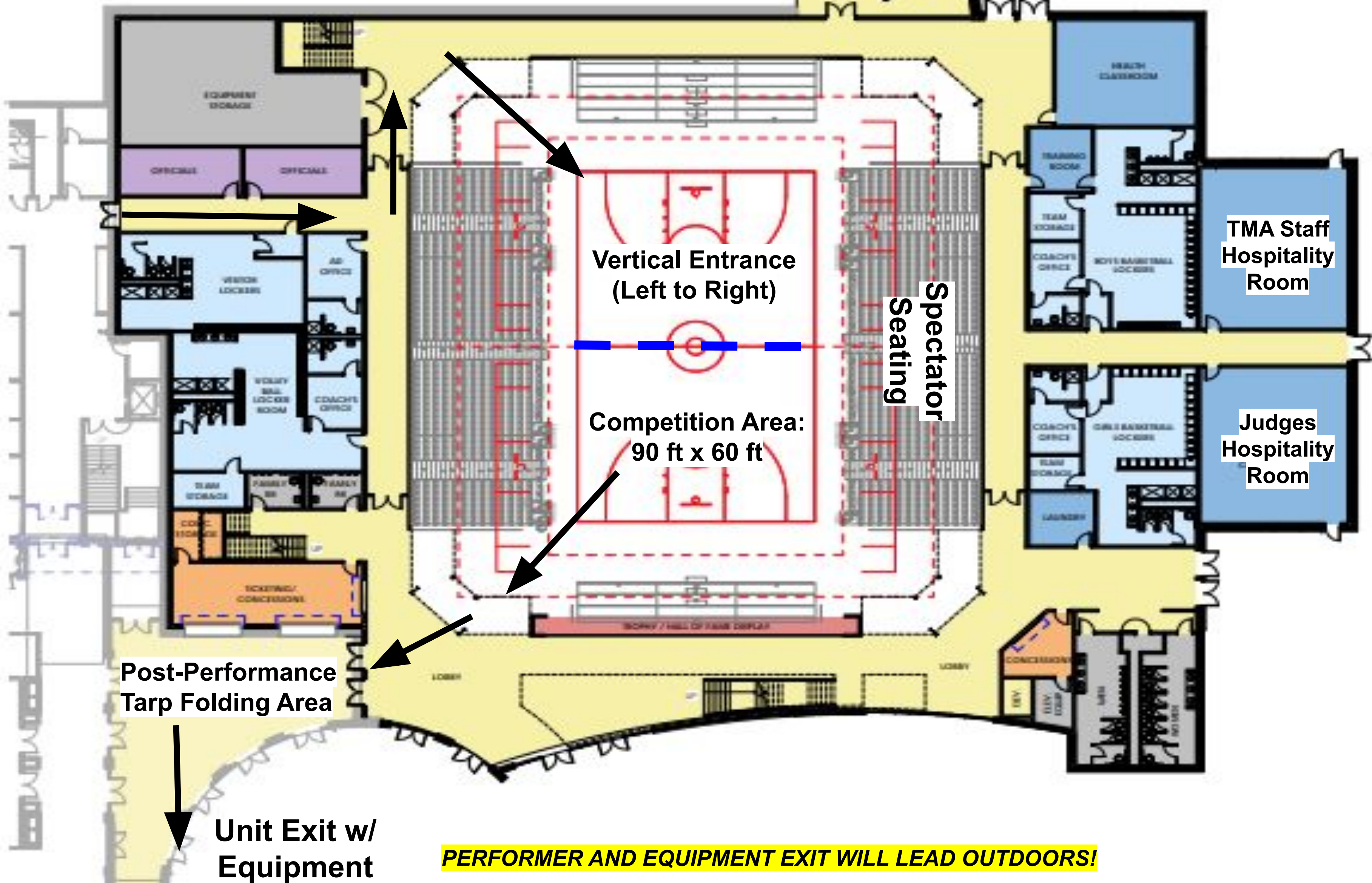
Staircase



Staircase to Warm Up



Gymnasium



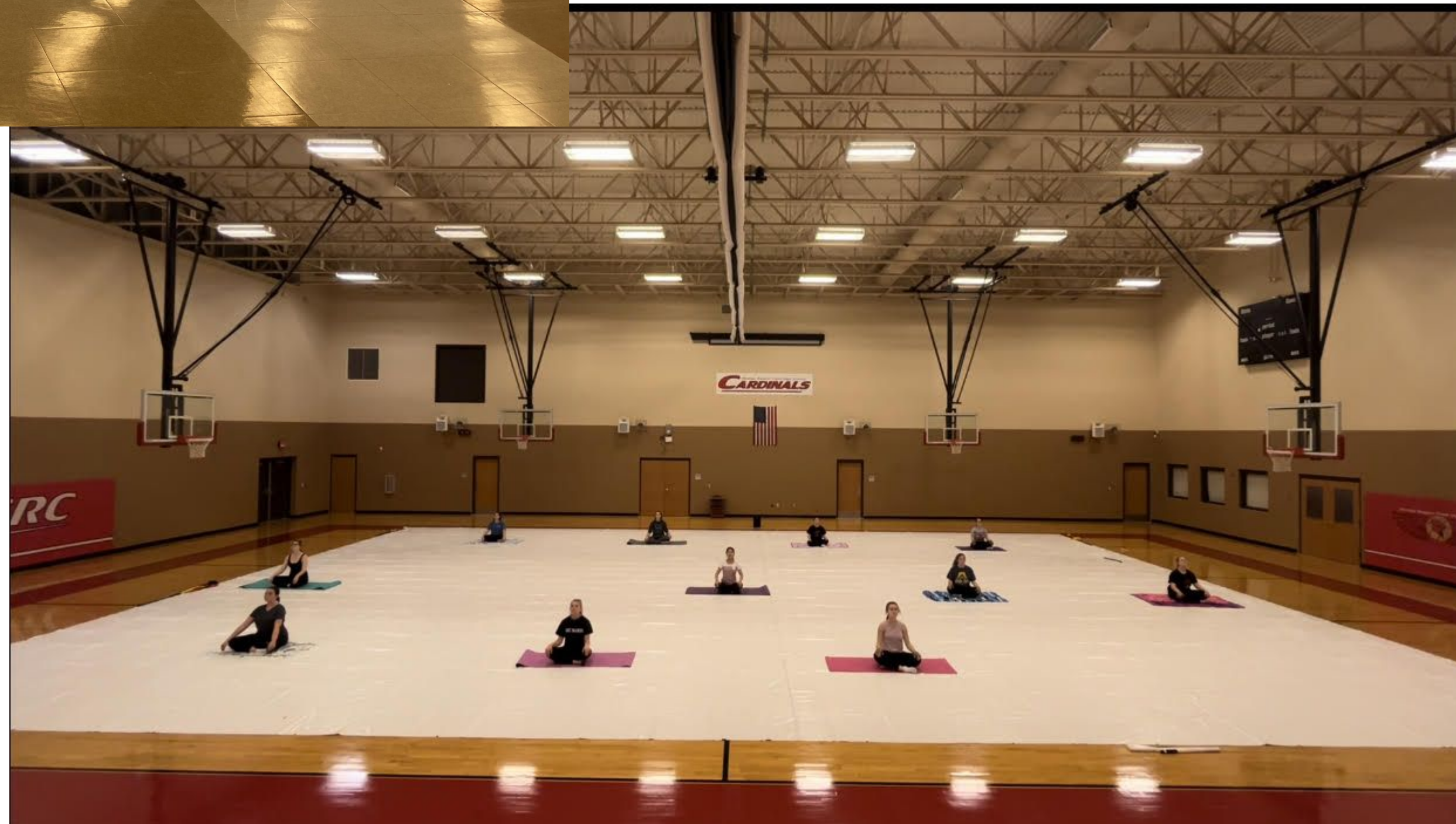
PERFORMER AND EQUIPMENT EXIT WILL LEAD OUTDOORS!



Body Warm Up



Equipment Warm Up





**Equipment Holding Area
(Tarp, Props, Percussion)**

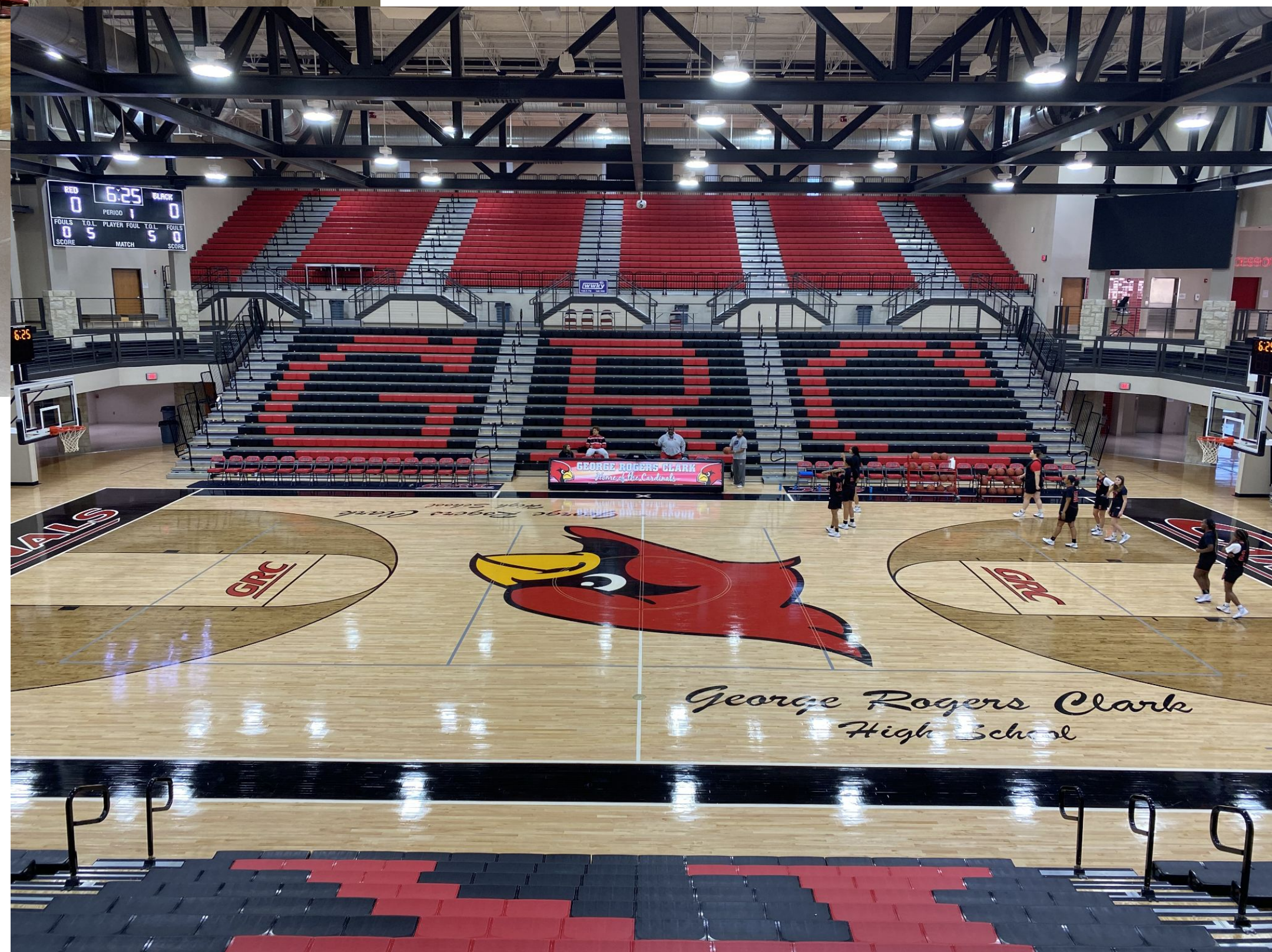


Tarp Refolding Area





**Performance Entrance to
Gymnasium**



**Performer View in
Gymnasium**





Pulled Pork	\$4
Jumbo Hot Dog	\$3
Nachos	\$4
Popcorn	\$2
Chips	\$1
Candy	\$2
Canned Drinks	\$1
<i>(Coke, Dt. Coke, Sprite, Ale-8, Dt. Ale-8)</i>	
Bottled Water	\$2



ADMISSION



\$9

Children Free
(5 and under)

