



TRI·STAT

Place:	Pulaski Co HS 511 E University Dr, Somerset, KY 42503
Date:	March 14, 2020
Time:	12:00 PM
Directions	From I-75 South Take Exit 62. Make a right onto KY 461. Continue approximately 17 miles until you reach KY 80. Take a right onto KY 480 and continue approximately 10 miles to KY 39. Make a right onto KY 39 and Pulaski Co High school will be on your left.
Doors:	Doors will open at approximately at 10:00 AM. Booster sales people from the units that want to display should bring their own tables for use. Please contact show sponsor. Space is limited. Contact Scott Sexton at scott.sexton@pulaski.kyschools.us or (606)307-5208
Phone Number for day of contest	Scott Sexton (606)307-5208
Contest director	Julie Acheson 859-468-2094
Admission:	\$9.00 Children 6 and under no charge

Unit Managers: It is suggested that you have your unit sign in together at the designated door. Please turn in your Music at guard check in. Back up CDs are recommended. Make sure all CDs are clearly marked. All Music will be downloaded and used for the whole season. Its responsibility to keep your units music updated

- Upon arrival at a contest, unit managers or representatives are to immediately sign in at the registration desk. Turn in music if not on file. You can access your judges commentary thru www.competitionsuite.com. It is optional to turn in a Mp3 or jump drive for judges commentary
- All performing members and eight additional staff members will be admitted at check-in. Each staff person will be stamped for front side. This must be done as a group admission
- All equipment is taken to the assigned area. Make sure to keep your equipment neat and organized in the hallway provided.
- Absolutely no cooking or smoking in any of the buildings that are used for the competition

Visual Recording: TriState does not allow video taping of any unit. It is your responsibility to pass this information on to your parents and students.

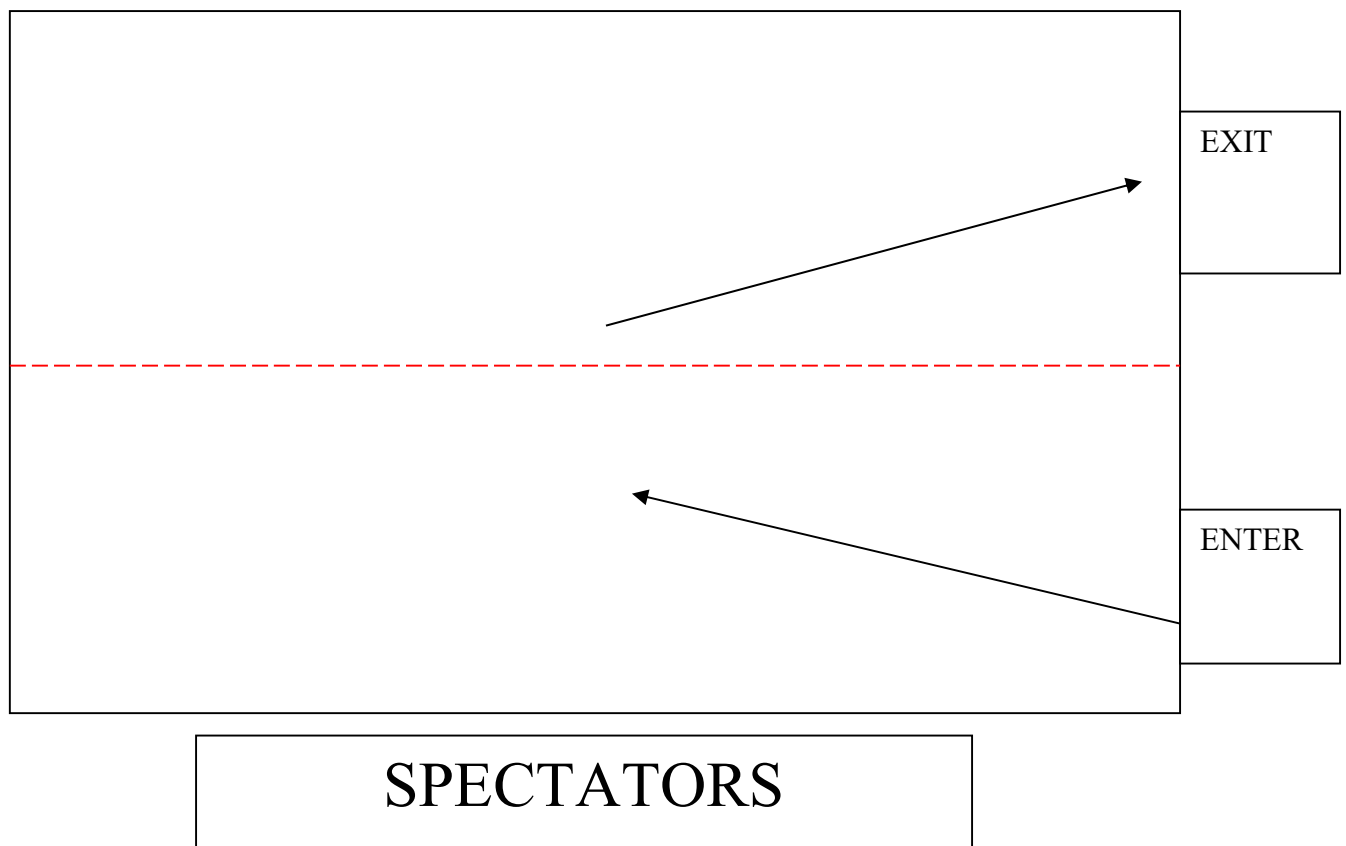
as of 2/12/2020

www.tristatemarchingarts.org



Horizontal Entrance

Do Not Block the doors on your exit. It will cause a delay of show. The next group must be able to start setting up on while you are exiting.
Exit directly with your tarp.



as of 2/12/2020

www.tristatemarchingarts.org

SCHOOL FLOW MAPS

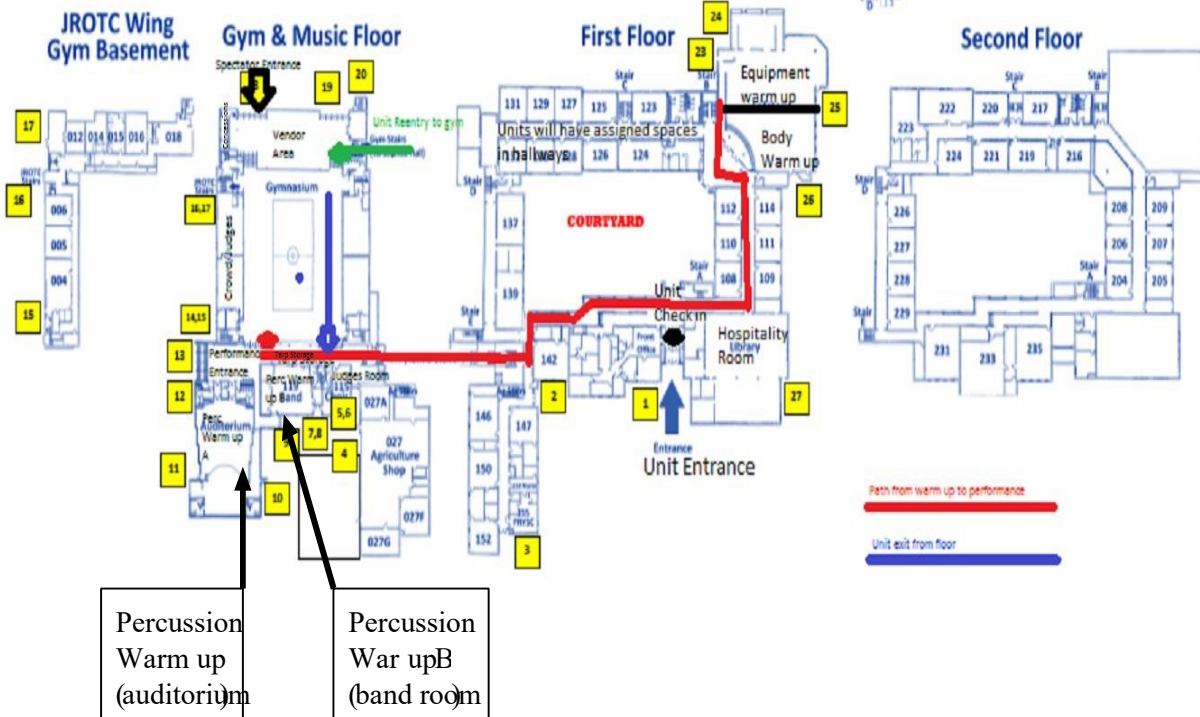
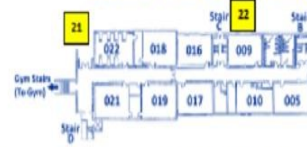


GPS: N37° 6' 23" W84° 36' 11"
Pulaski County High School

511 University Drive, Somerset, KY 42503
 Phone 606-679-1574 | Fax 606-677-2771

HIGHWAY 39

Science Hall (Basement)



as of 2/12/2020

www.tristatemarchingarts.org