



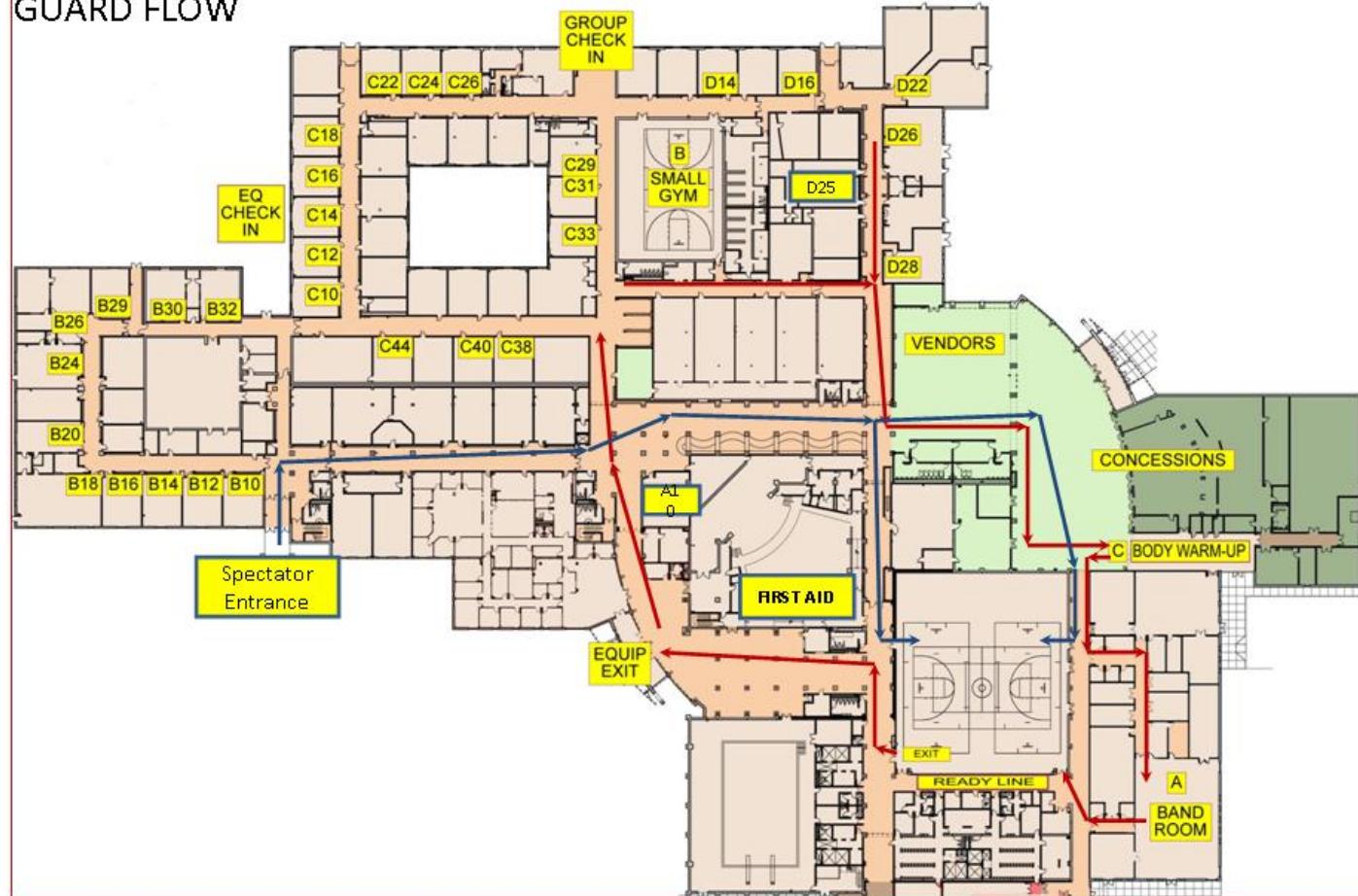
<b>Place:</b>	Milford HS – <a href="#">1 Eagles Way - Milford, Ohio</a>
<b>Date:</b>	March 7, 2020
<b>Time:</b>	10:00 AM
<b>Directions</b>	<p><b>I-75</b> (from Dayton) or <b>I-71</b> (from Cincinnati/Northern Kentucky) to <b>I-275</b> east to Milford-Blanchester exit. Turn left off exit. Over Expressway go through 2 lights. You will be on Route 28 by-pass. Go to first exit (Wolf Pen-Pleasant Hill). Turn right off exit. Turn right at Junior High School on Eagle’s Way. Follow to High School in back.</p> <p>From <b>I-275</b> west to Milford-Blanchester exit. Turn right off exit. You will be on Route 28 by-pass. Go to first exit (Wolf Pen-Pleasant Hill). Turn right off exit. Turn right at Junior High School on Eagle’s Way. Follow to High School in back.</p>
<b>Doors:</b>	Doors will open at approximately at 8:00 AM. Booster sales people from the units that want to display should bring their own tables for use. There are 50 spaces (10’X10’) available for vendors. Please contact show sponsor. Space is limited. Contact Alison Brice email <a href="mailto:wintershow@milfordbands.org">wintershow@milfordbands.org</a> 513-477-4991.
<b>Phone Number for day of contest</b>	Jason Long 513-253-2297
<b>Contest director</b>	Julie Acheson 859-468-2094
<b>Admission:</b>	\$9.00 Adults, Children 6 and under no charge

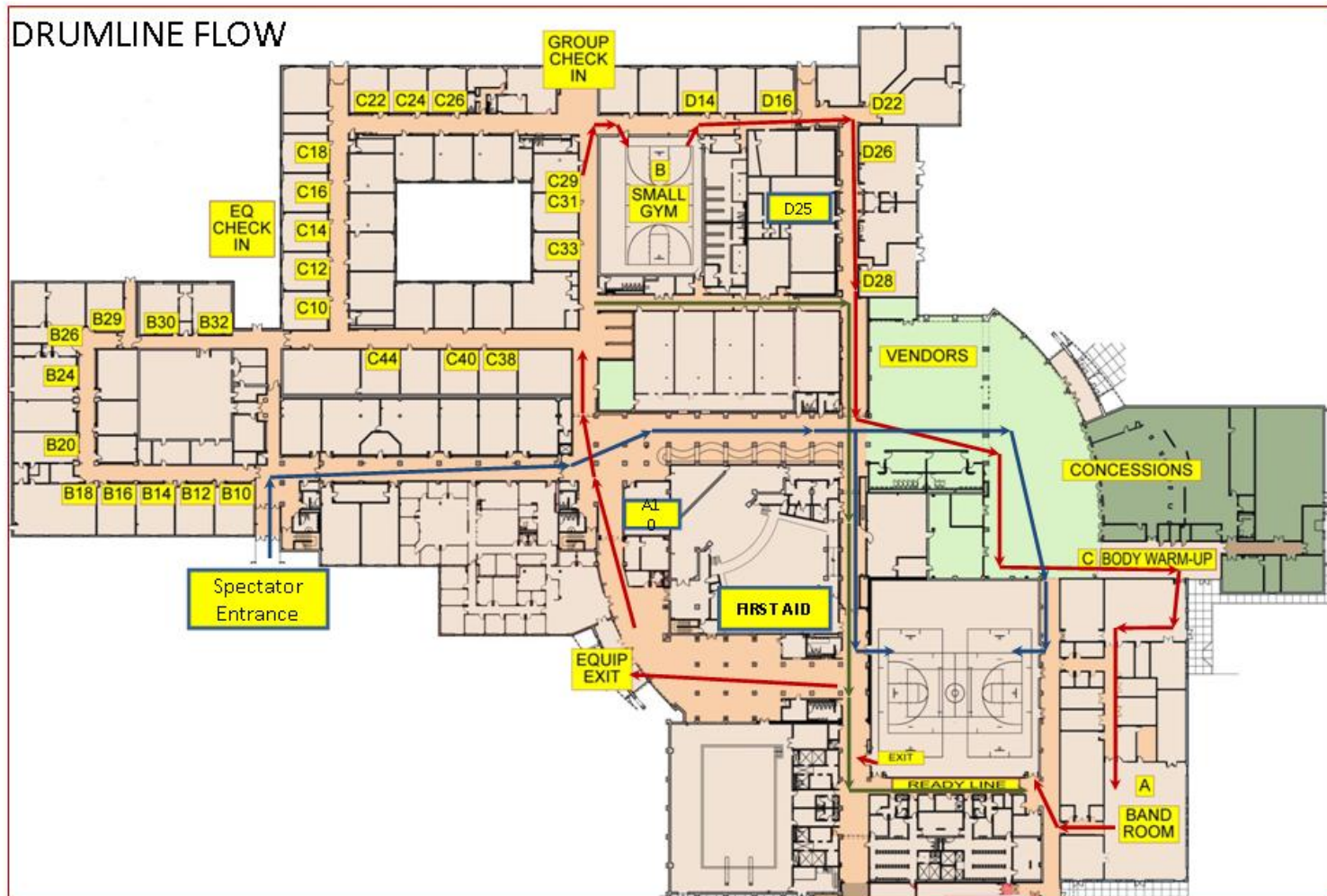
**Unit Managers:** It is suggested that you have your unit sign in together at the designated door. Please turn in your Music at guard check in. Back up CDs are recommended. Make sure all CDs are clearly marked. All Music will be downloaded and used for the whole season. Its responsibility to keep your units music updated

- Upon arrival at a contest, unit managers or representatives are to immediately sign in at the registration desk. You can access your judges commentary thru [www.competitionsuite.com](http://www.competitionsuite.com).
- All performing members and up to eight additional staff members will be admitted at check-in. Each staff person will be stamped for front side. This must be done as a group admission
- All equipment is taken to the assigned area. Make sure to keep your equipment neat and organized in the hallway provided.
- Absolutely no cooking or smoking in any of the buildings that are used for the competition

**Visual Recording:** TriState does not allow video taping of any unit. It is your responsibility to pass this information on to your parents and students.

# GUARD FLOW





as of 12/12/2020

