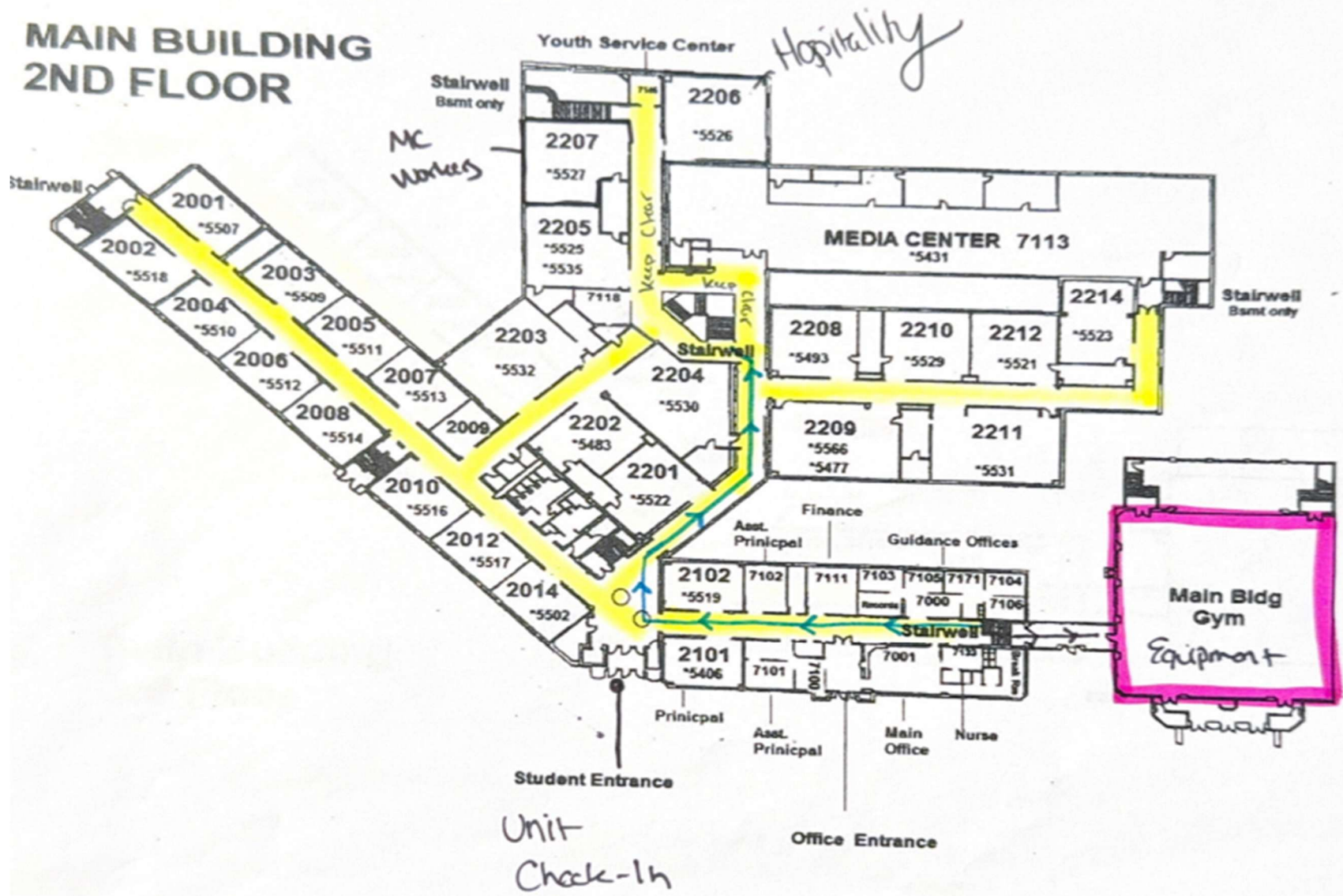
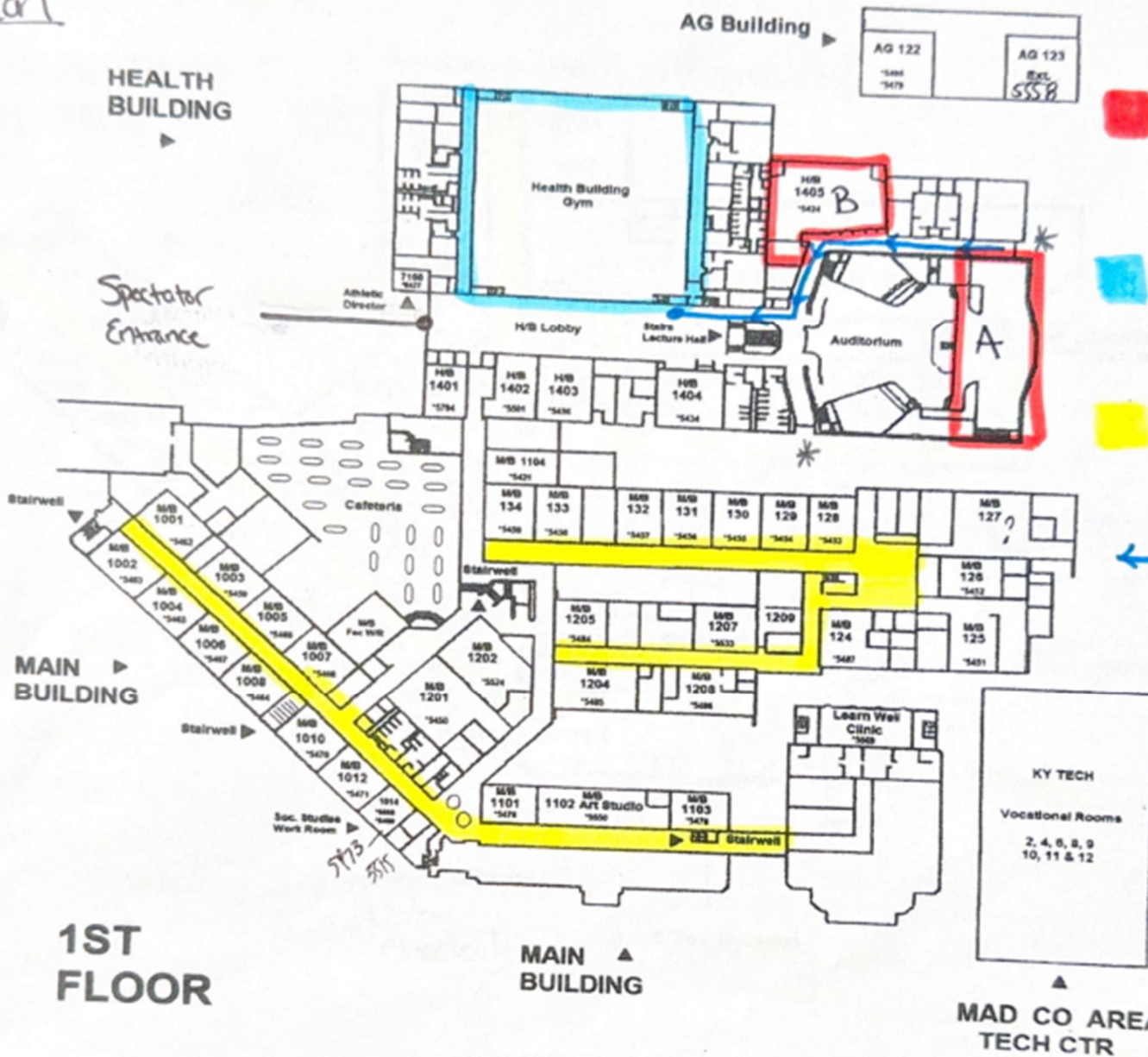




# MAIN BUILDING 2ND FLOOR



Percussion



■ Percussion warm-up A/B

■ Performance gym

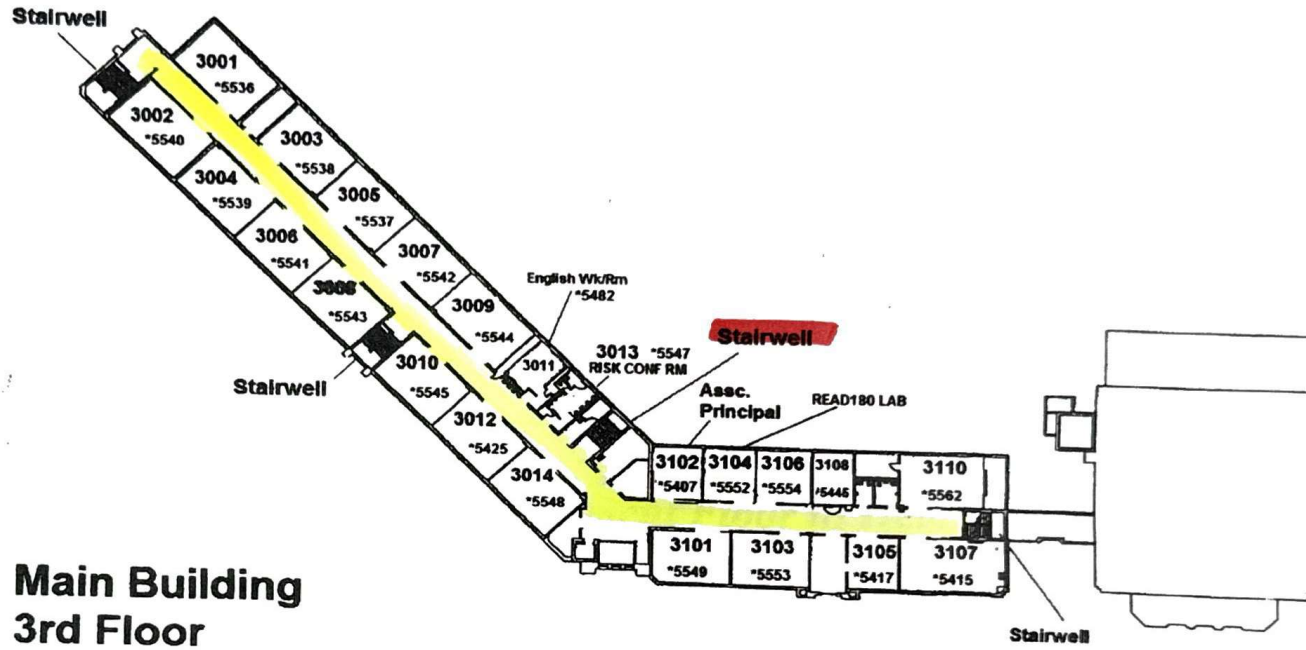
■ Hallway Staging areas

← warmup to Ready Line

\* pop check-in

1ST FLOOR

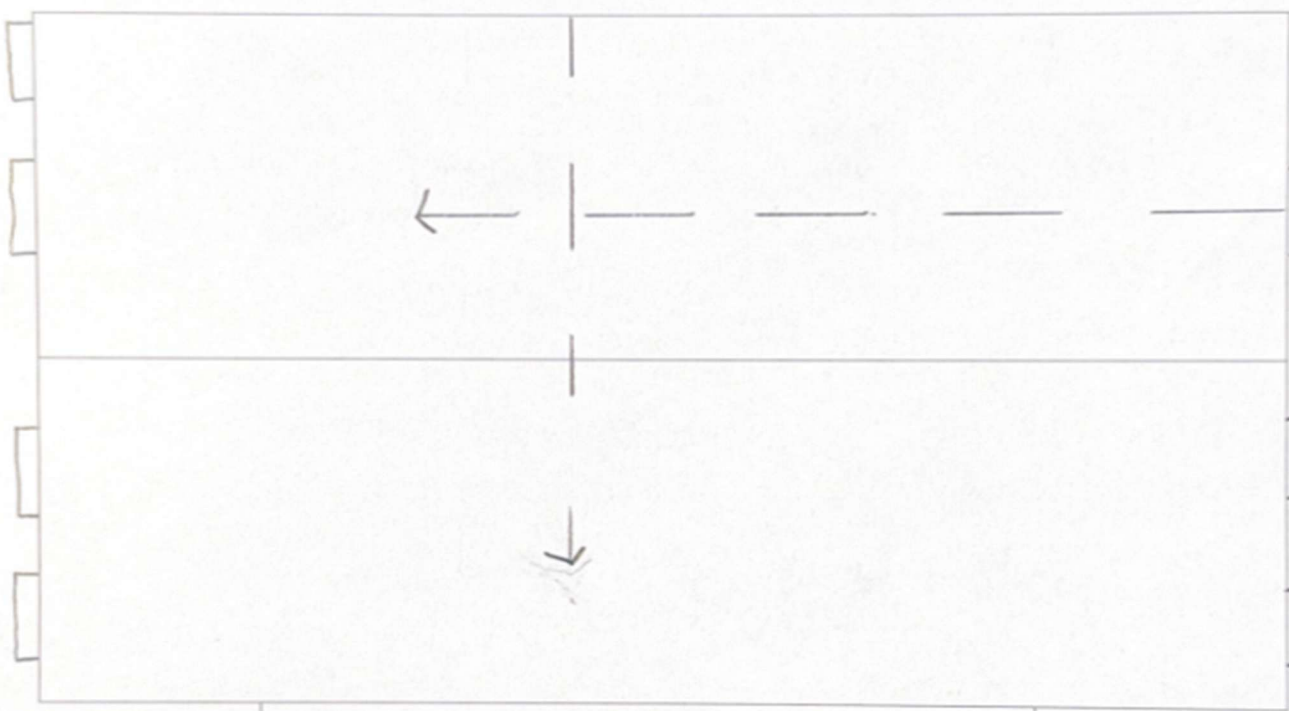
MAIN BUILDING



**Main Building  
3rd Floor**

Outside

Unit Exit



\* Performer Entrance to top of back side seats

Unit Entrance

\* Run Plan Unit Exit

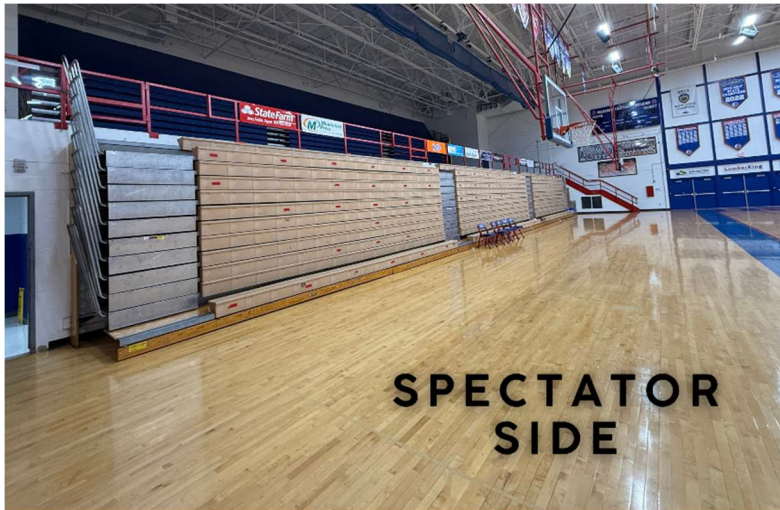
Spectator Entrance

Spectators

Horizontal Entrance Back to front

[www.tristatemarchinarts.org](http://www.tristatemarchinarts.org)

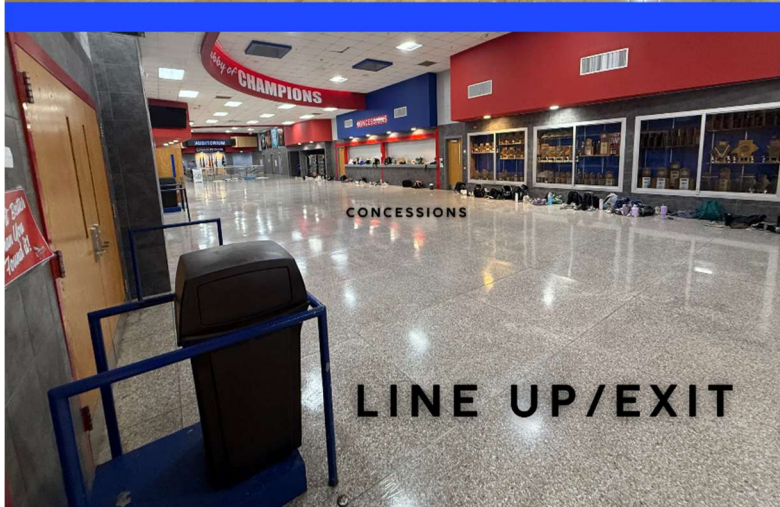
Top prop pick up



**SPECTATOR  
SIDE**



**BODY  
WARMUP**



**CONCESSIONS**

**LINE UP/EXIT**



**BODY  
WARMUP**

