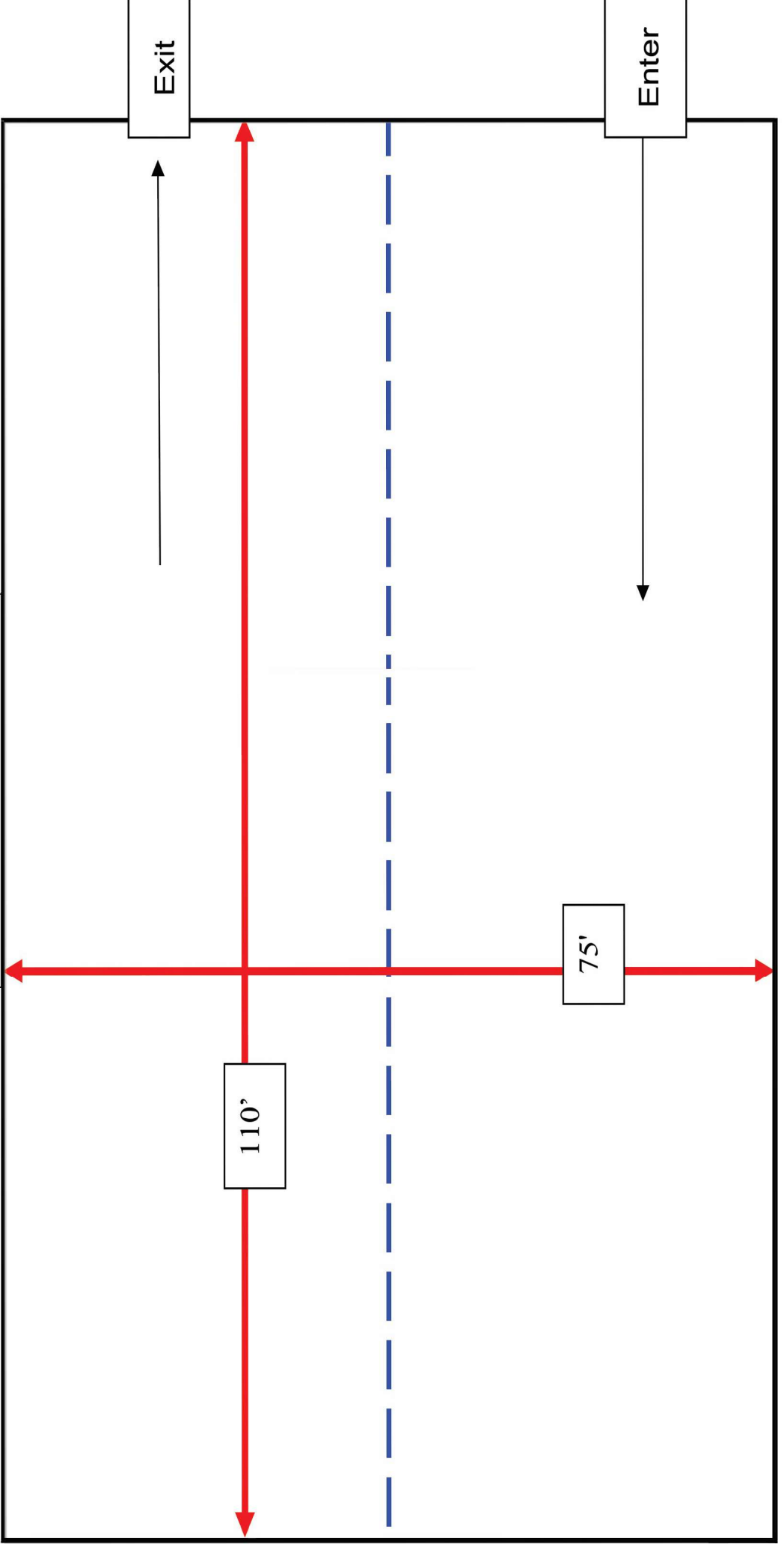




Horizontal Entrance
Back to Front
Spectators

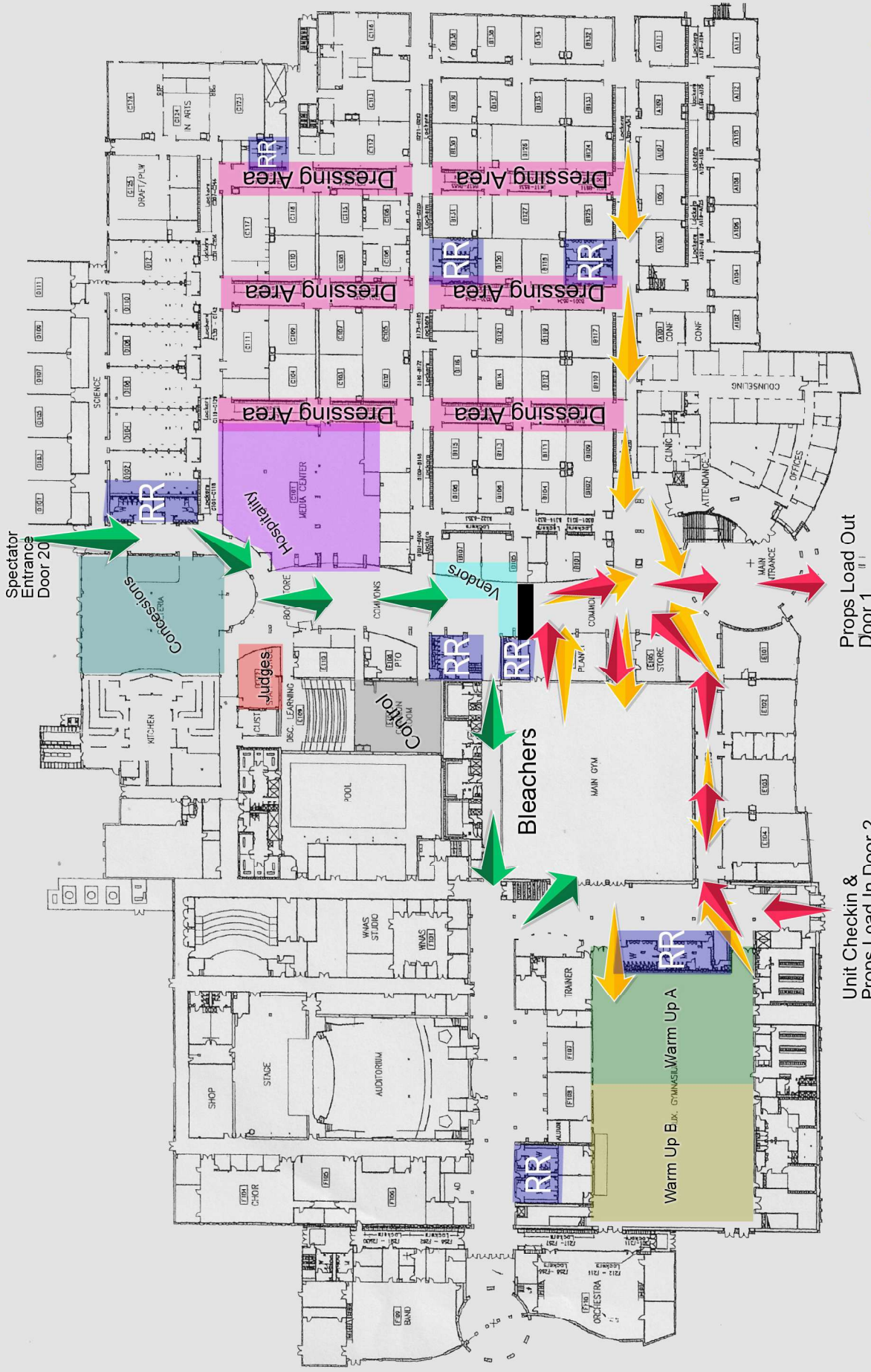


Exit

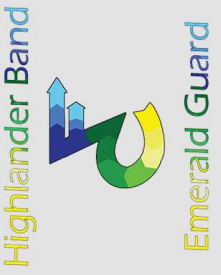
Enter

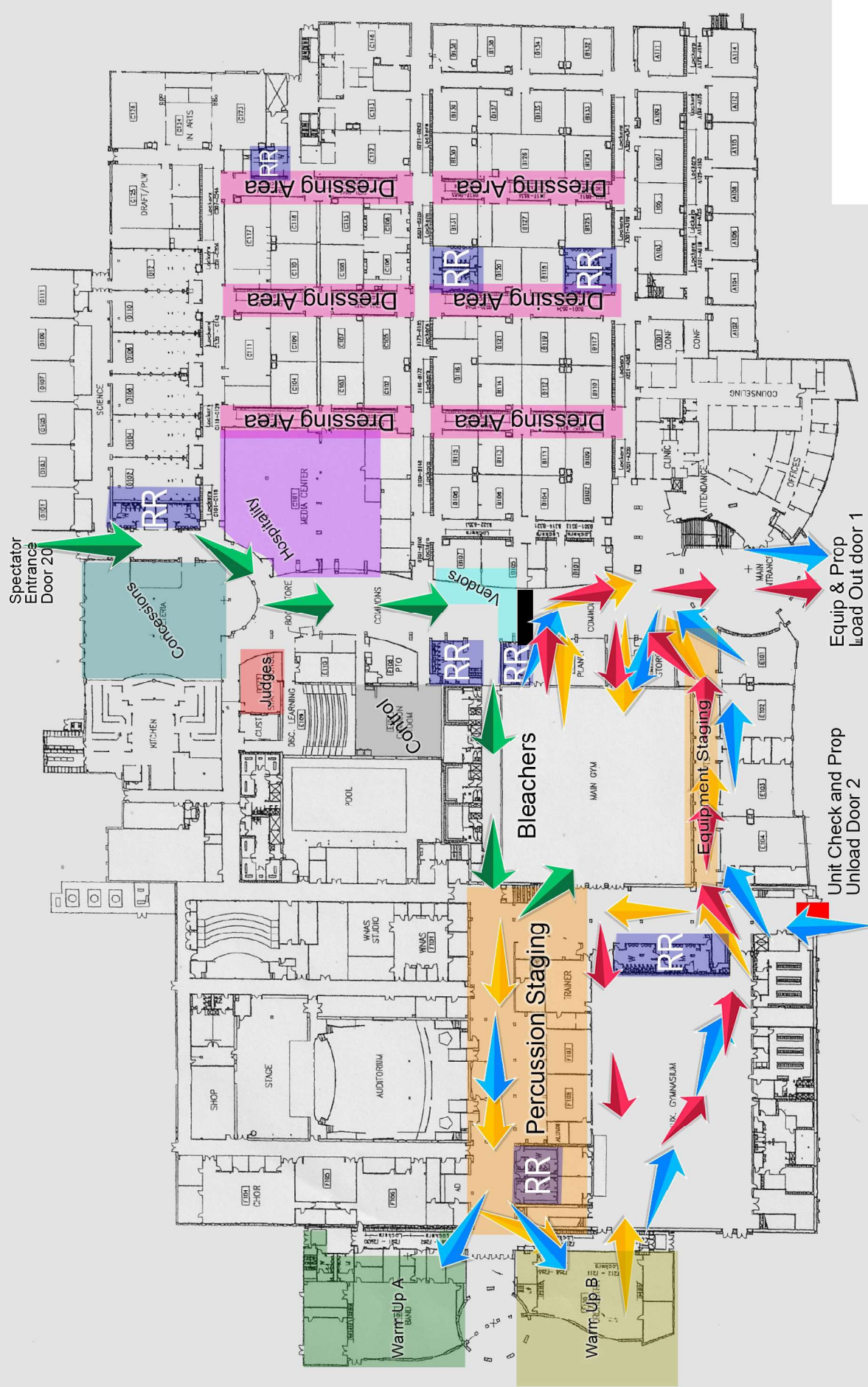
110'

75'

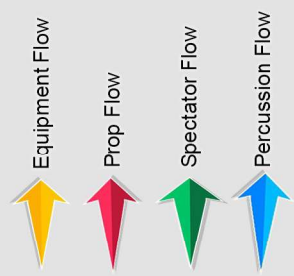


FC Invitational Guard Flow 2025





FC Invitational Percussion Flow 2025





FC Invitational Spectator Flow 2025

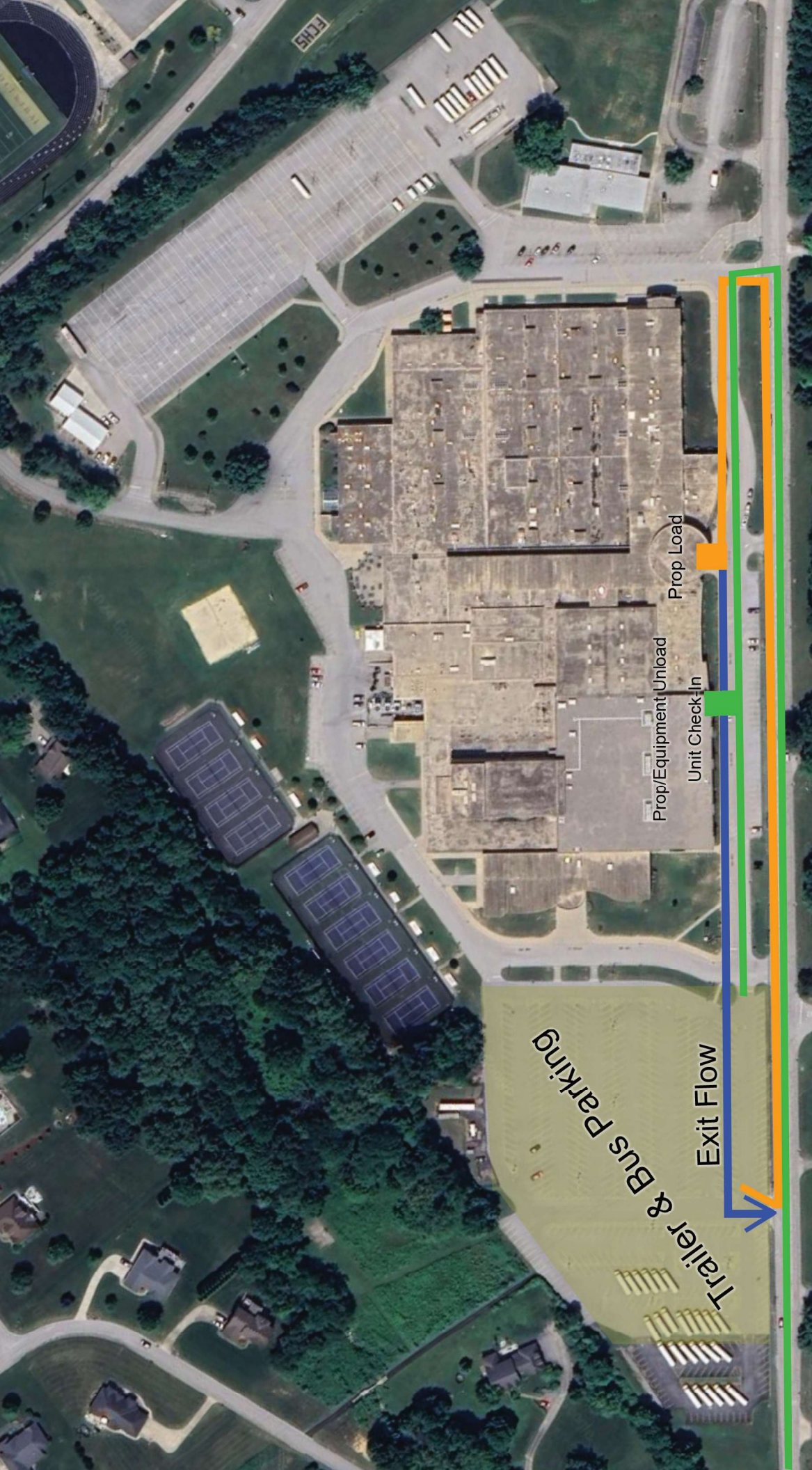


-  Handicapped Parking
-  Spectator Parking
-  Spectator Path to Entrance

Highlander Band



Emerald Guard



FC Invitational Trailer & Bus Flow 2025

- Trailer & Equipment flow entry
- Exit Flow Trailers and Buses
- Prop & Equipment Load



Highlander Band



Emerald Guard

TMA @ Floyd Central

Unit Check-in

Unit check-in will be at door 2 on the North side of the school. This is also where equipment and prop unloading will be located. The director of each unit must check in and get the correct number of wristbands for their unit. You will receive up to 2 wristbands per unit for drivers and a maximum of 8 wristbands per unit for prop helpers.

Unit Parking

Buses and trailers will park on the east side of the school in the performing arts parking lot. Director parking is also in the performing arts parking lot. Once you have parked you can enter through door 2.

Spectator Parking and Admissions

All spectators will park on the west side of the school in the band practice field. All spectators will enter on the south side of the school at door 20. Admissions is \$10 per spectator, children 6 and under are free. We can accept cash and credit cards at admissions.

Homeroms

Homeroms will be in the hallways. Please do not leave valuable items in the homeroom areas. Changing areas will be provided.

Hospitality Room

The hospitality room will be in the MPR room. Directors, instructors and bus drivers with the correct wristband are welcome to visit the hospitality room.

Props and Equipment

Props will enter through door 2. This is the same door as unit check-in. There are three double doors with the posts removed for larger props. You must have a wristband to enter the building. The props will be staged in the hallway behind the gym. As your unit transits to perform you can get your props and arrive at the staging area.

Prop Loading

Prop loading will be at door 1. When you exit the gym after your performance you will exit into the rotunda at door 1. Your trailer driver can go get the trailer and bring it around to load your props and equipment at door 1.

Critique

Critique will take place in the media center. Please no food or drinks in the media center.

Concessions

Concessions will be located in the cafeteria. Concessions will accept cash and credit cards. We will also have a small snack cart located closer to the gym entrance that will have drinks and snacks. This will be cash only.