



Place:	Henryville HS, 213 N Ferguson St., Henryville, IN 47126
Date:	February 8, 2020
Time:	12:00PM
Directions	<p>From Indianapolis: Take I-65 South to Exit 19, turn left off ramp, turn left at 4 way stop.</p> <p>From Louisville: Take I-65 North to Exit 19, turn right off ramp, turn left at 4 way stop.</p> <p>From Cincinnati: Take I-71 South to Exit 9B (Gene Snyder), Continue onto IN265, Take exit 7A for I-65 North then take Exit 19, turn right off ramp, turn left at 4 way stop.</p>
Doors:	Doors will open at approximately at 10:00 AM.
Phone Number for day of contest	Ashley Parker 812-725-2174
Contest director	Angie 859-982-4913
Admission:	\$9.00 Children 6 and under no charge

Unit Managers: It is suggested that you have your unit sign in together at the designated door.. Back up CDs of performance music are recommended. All music will be downloaded for the event from Competition Suite. It's the unit directors responsibility to keep your units music updated on the Competition Suite website.

- Upon arrival at a contest, unit managers or representatives are to immediately sign in at the registration desk. You can access your judges commentary thru www.competitionsuite.com.
- All performing members and **eight** additional staff members will be admitted at check-in. Each staff person will be stamped for front side. This must be done as a group admission
- All equipment is taken to the assigned area. Make sure to keep your equipment neat and organized in the hallway provided.
- Absolutely no cooking or smoking in any of the buildings that are used for the competition

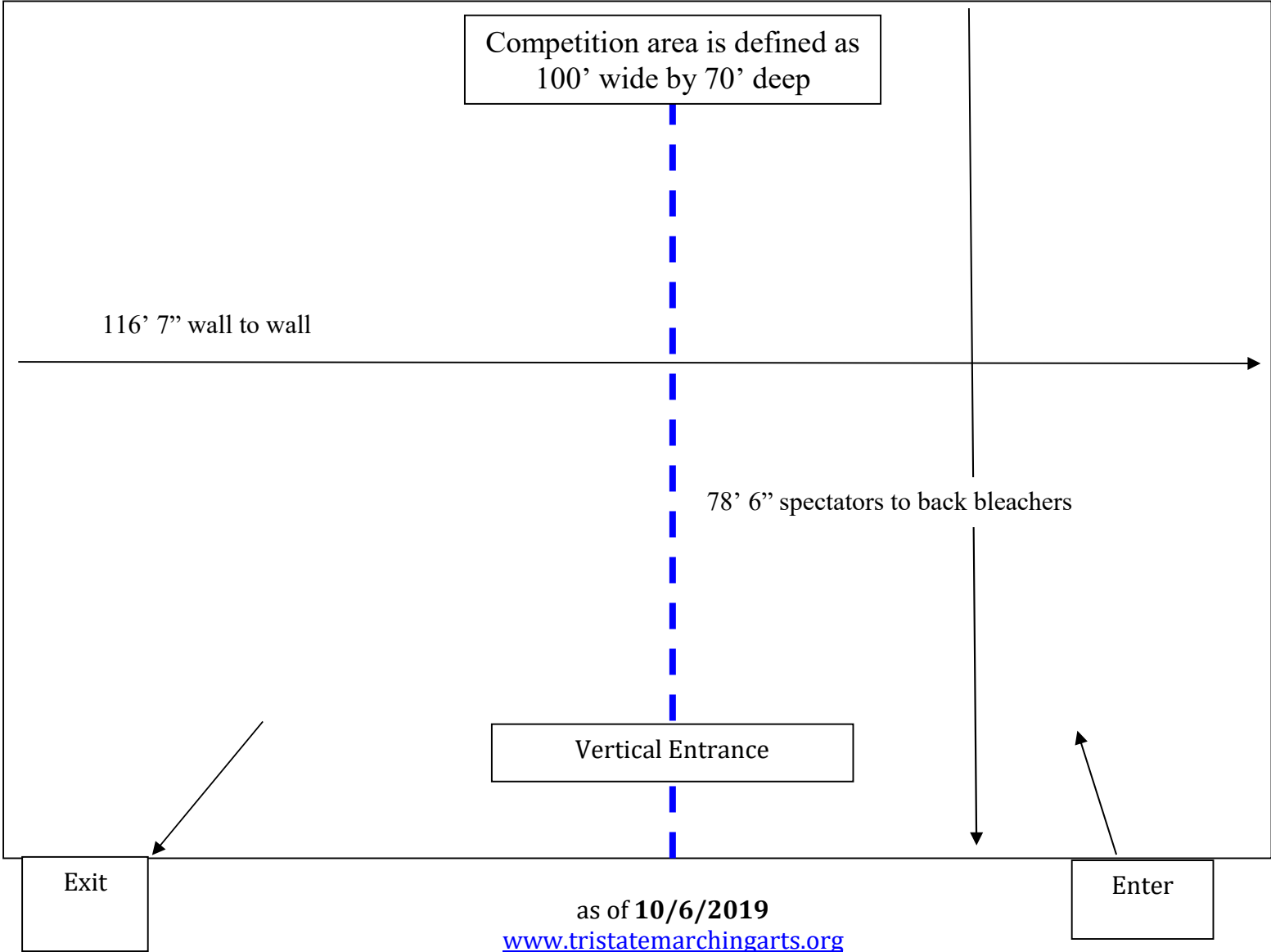
Visual Recording: TriState does not allow video taping of any unit. It is your responsibility to pass this information on to your parents and students.

as of 10/6/2019

www.tristatemarchingarts.org

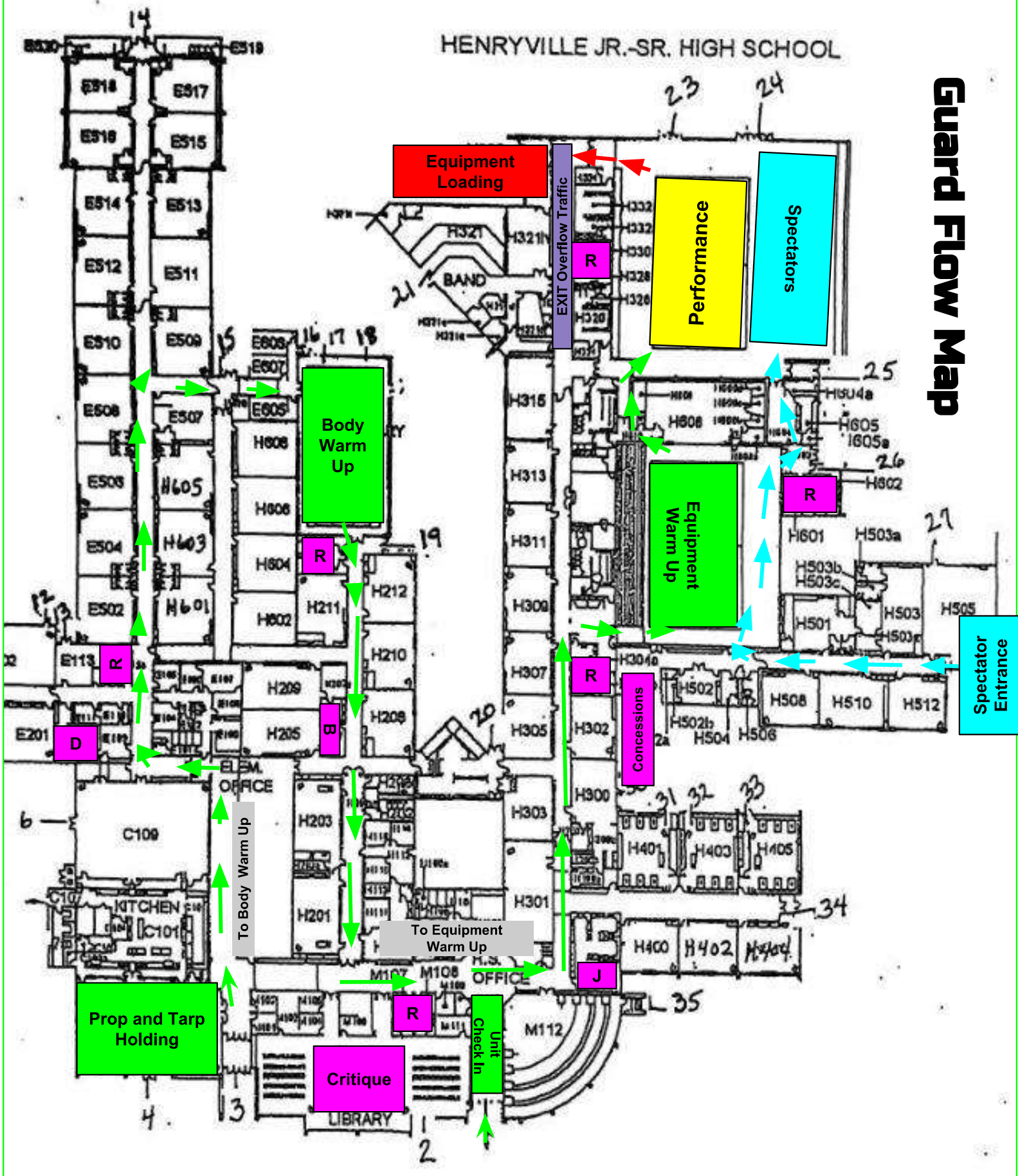
COMPETITION AREA ENTRANCE & EXIT DIAGRAM

SPECTATORS



HENRYVILLE JR.-SR. HIGH SCHOOL

Guard Flow Map



R - Restrooms
 D - Director Hospitality
 B - Bus Driver Hospitality
 J - Judges Hospitality

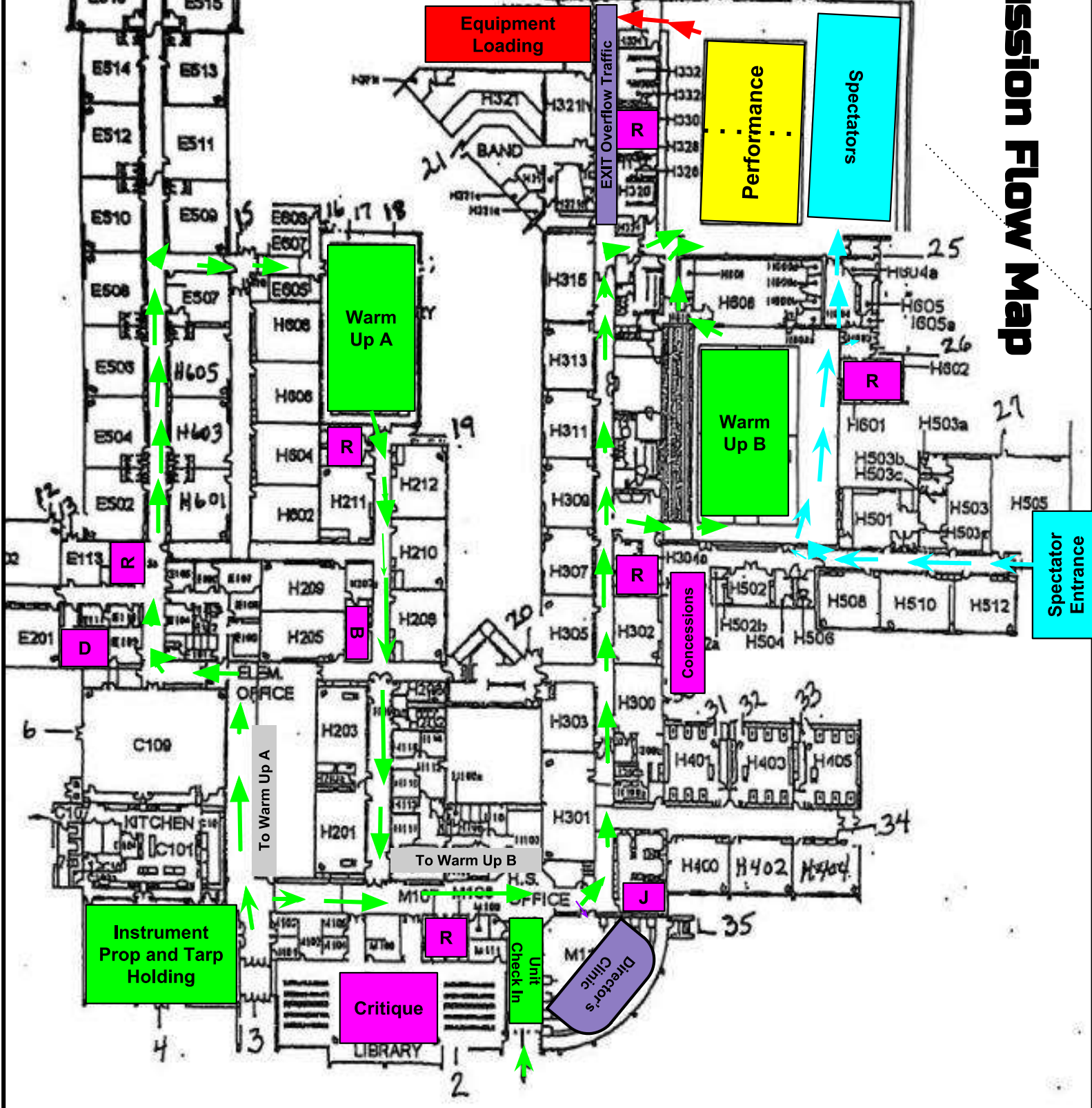
Green = Guard Flow to Warm Up/Performance

Purple = Guard Flow EXIT

Blue = Spectator Flow

HENRYVILLE JR.-SR. HIGH SCHOOL

Percussion Flow Map

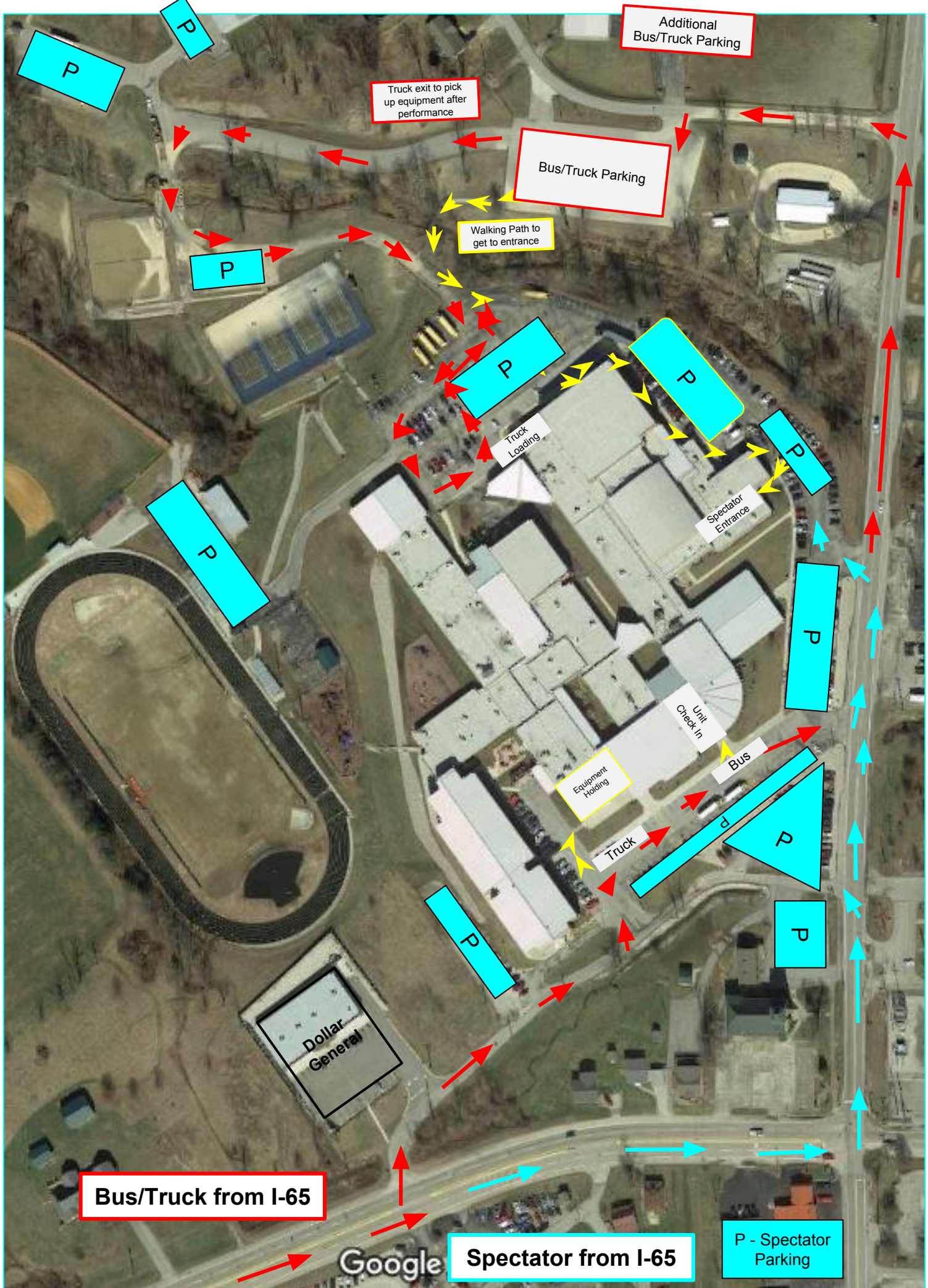


R - Restrooms
 D - Director Hospitality
 B - Bus Driver Hospitality
 J - Judges Hospitality

Green = Percussion Flow to Warm Up/Performance

Purple = Percussion Flow EXIT

Blue = Spectator Flow



Additional Bus/Truck Parking

Truck exit to pick up equipment after performance

Bus/Truck Parking

Walking Path to get to entrance

Truck Loading

Spectator Entrance

Unit Check In

Equipment Holding

Truck

Bus

Dollar General

Bus/Truck from I-65

Spectator from I-65

P - Spectator Parking

Google

Performance Gym - Spectator View



Performance Gym - Performer View



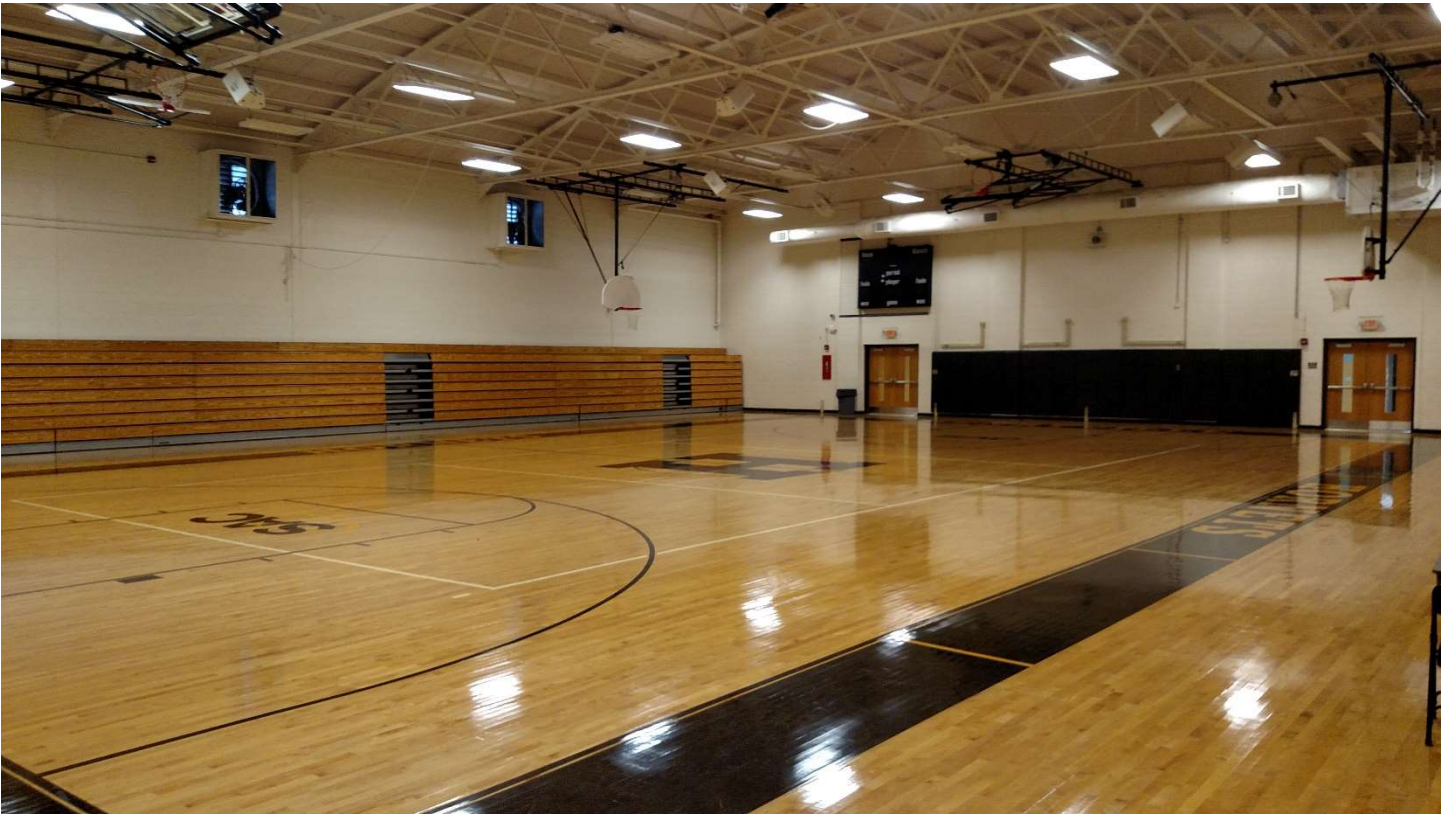
Performance Gym - Entrance



Performance Gym - Exit (groups go directly out to loading)



Warm Up Gym A



Warm Up Gym B

