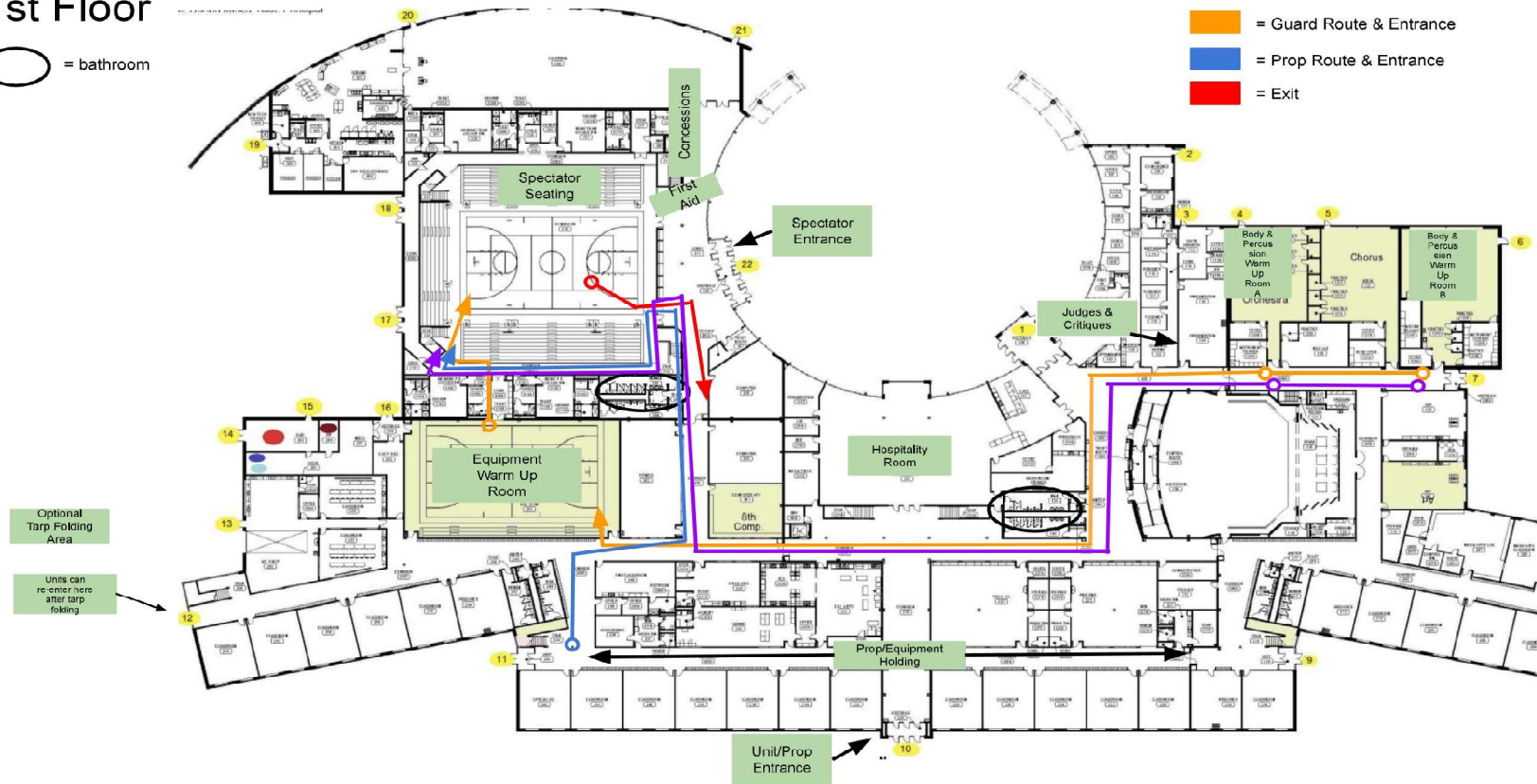


Martha Layne Collins HS

1st Floor

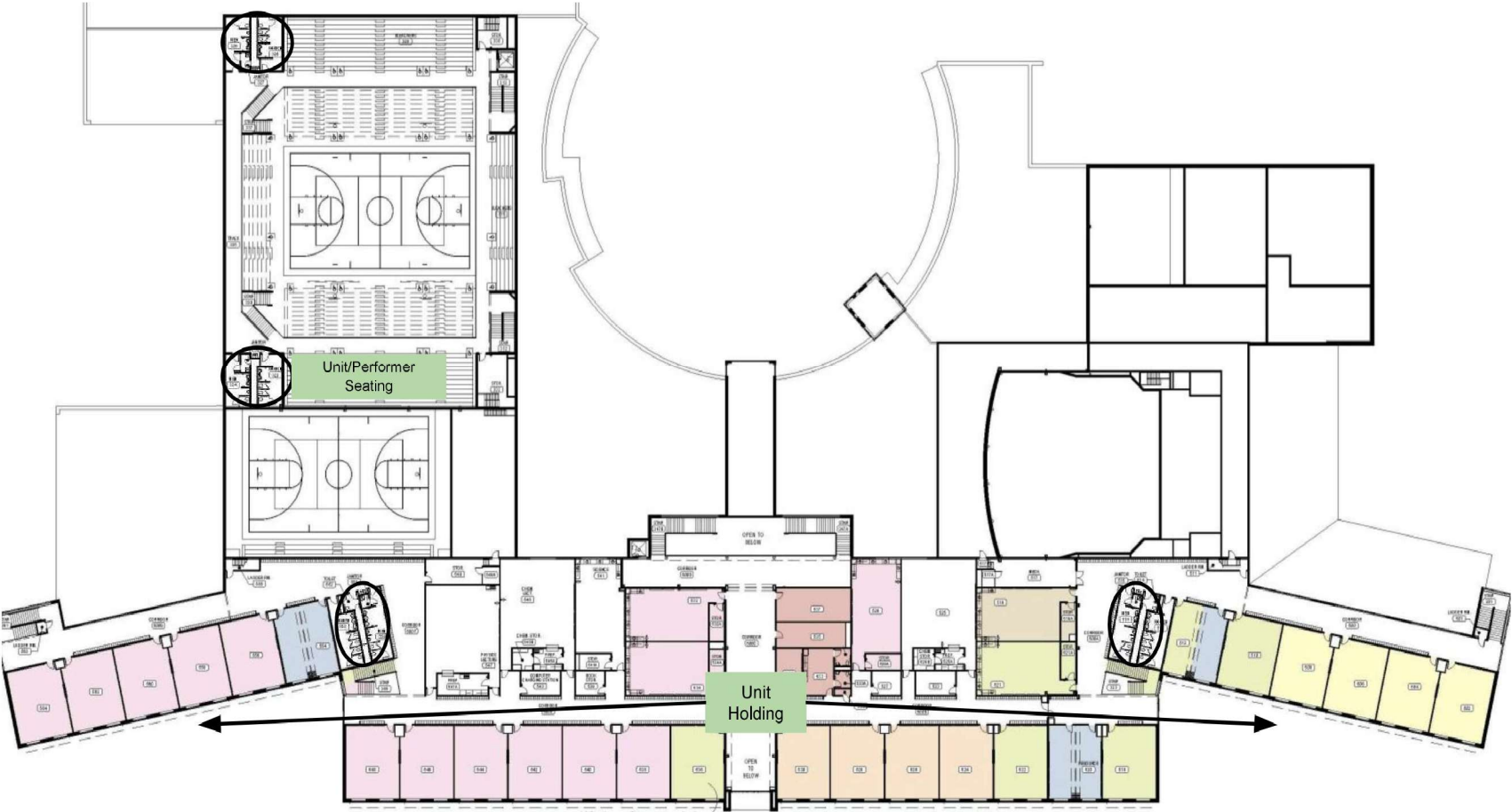
○ = bathroom

- = Percussion Route & Entrance
- = Guard Route & Entrance
- = Prop Route & Entrance
- = Exit



2nd Floor

○ = bathroom



Martha Layne Collins HS

Parents may drop off their car rider athletes and then proceed to the parking areas.

Buses will drop athletes off at their entrance and proceed to the bus lot.

Units may only have either a truck + trailer or two vehicles parked in the staging area.
You will need to move your equipment vehicles following the unit performance.



Martha Layne Collins HS



Martha Layne Collins HS

Spectator View



