

# Participant Entrance (Judge/Unit/Volunteer)



George Rogers  
Clark High School

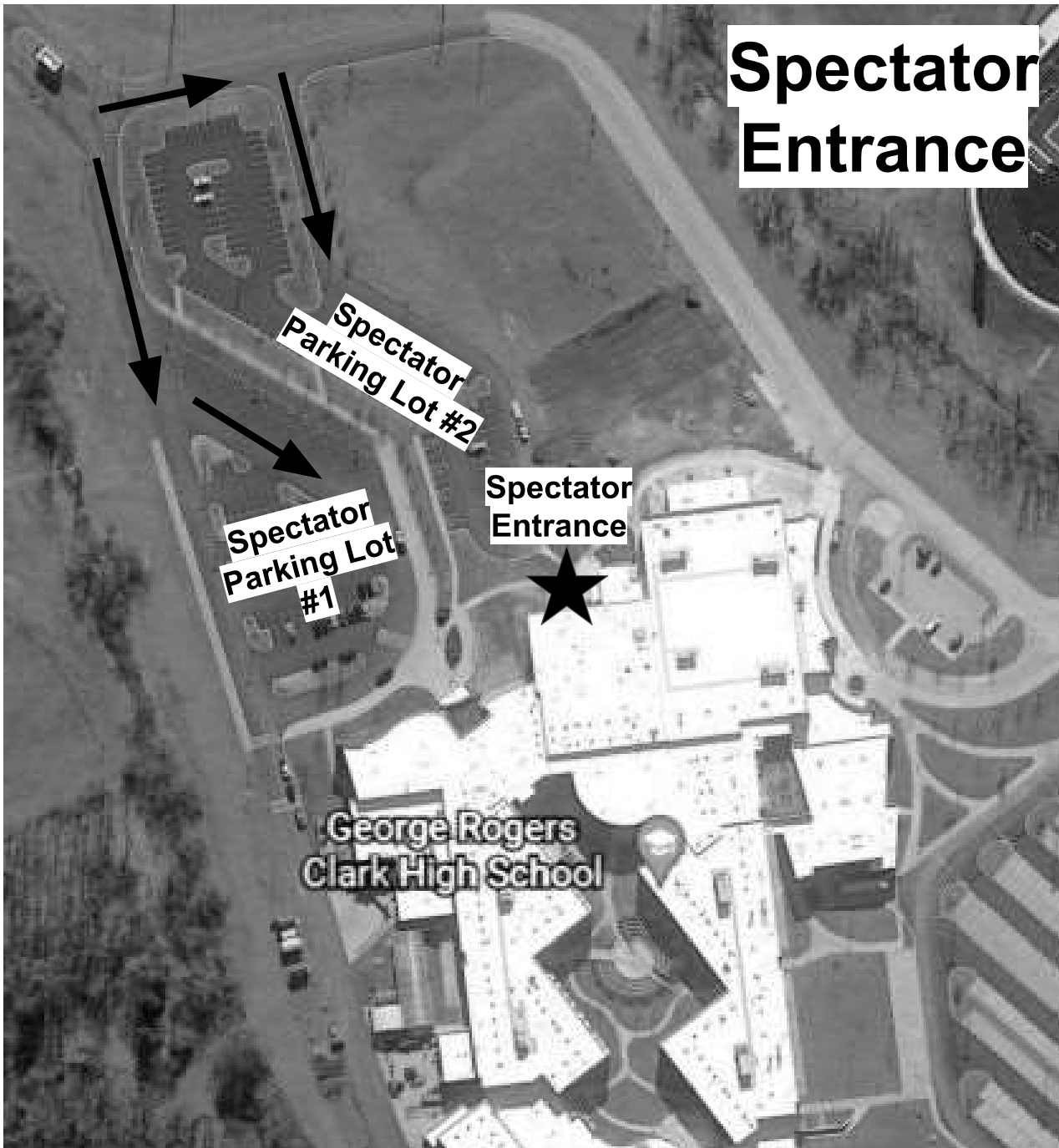
Judge  
Parking

Volunteer  
Check In

Unit  
Check In

Volunteer Parking

Unit Parking (Bus, Equipment  
Trailers, Staff)



**Spectator  
Entrance**

**Spectator  
Parking Lot #2**

**Spectator  
Parking Lot  
#1**

**Spectator  
Entrance**

**George Rogers  
Clark High School**



**TMA**

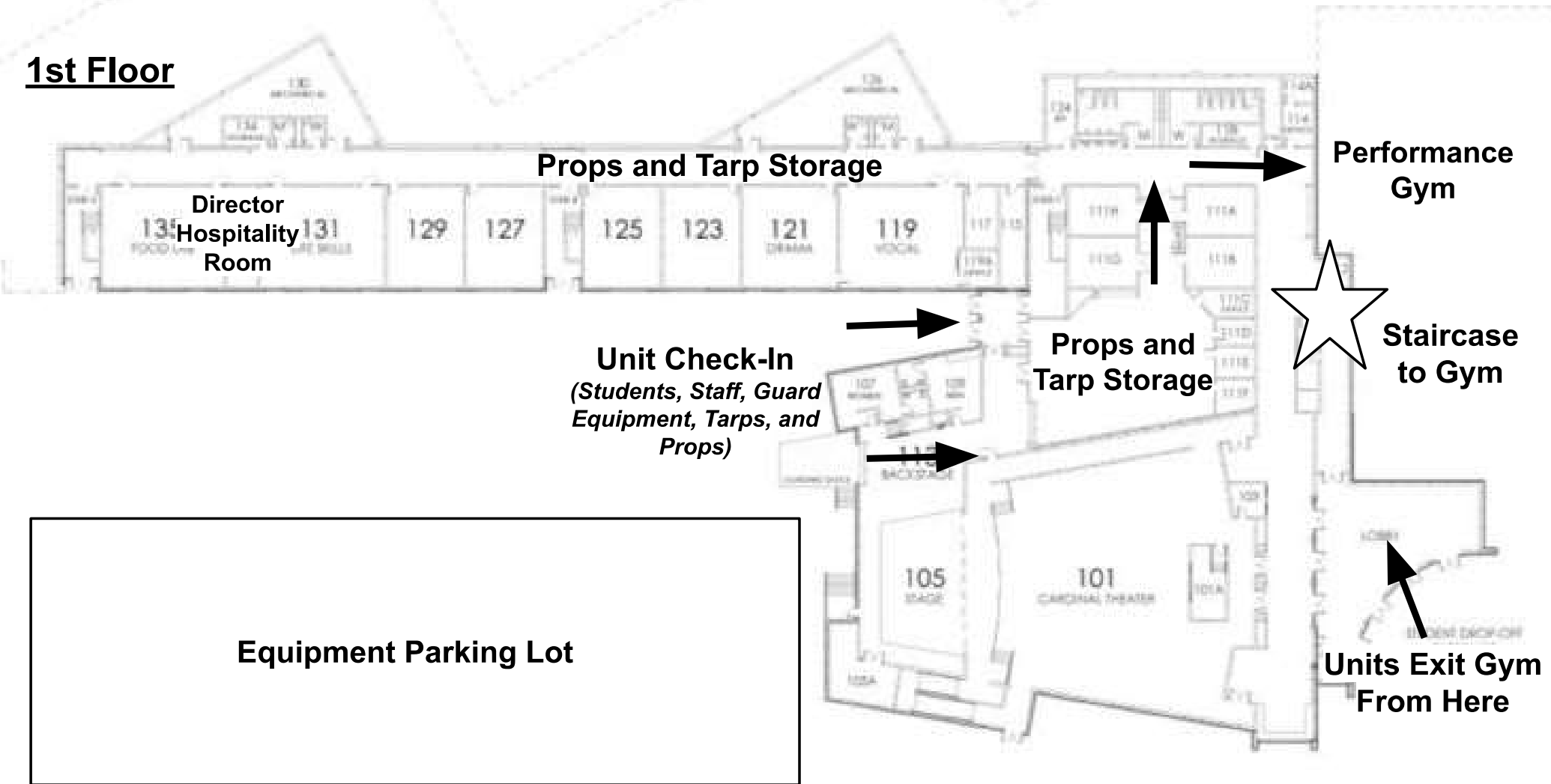


**@ GRC**

**Director's**

**Packet**

**1st Floor**



**Props and Tarp Storage**

**Director  
Hospitality  
Room**

**Performance  
Gym**

**Unit Check-In**  
*(Students, Staff, Guard  
Equipment, Tarps, and  
Props)*

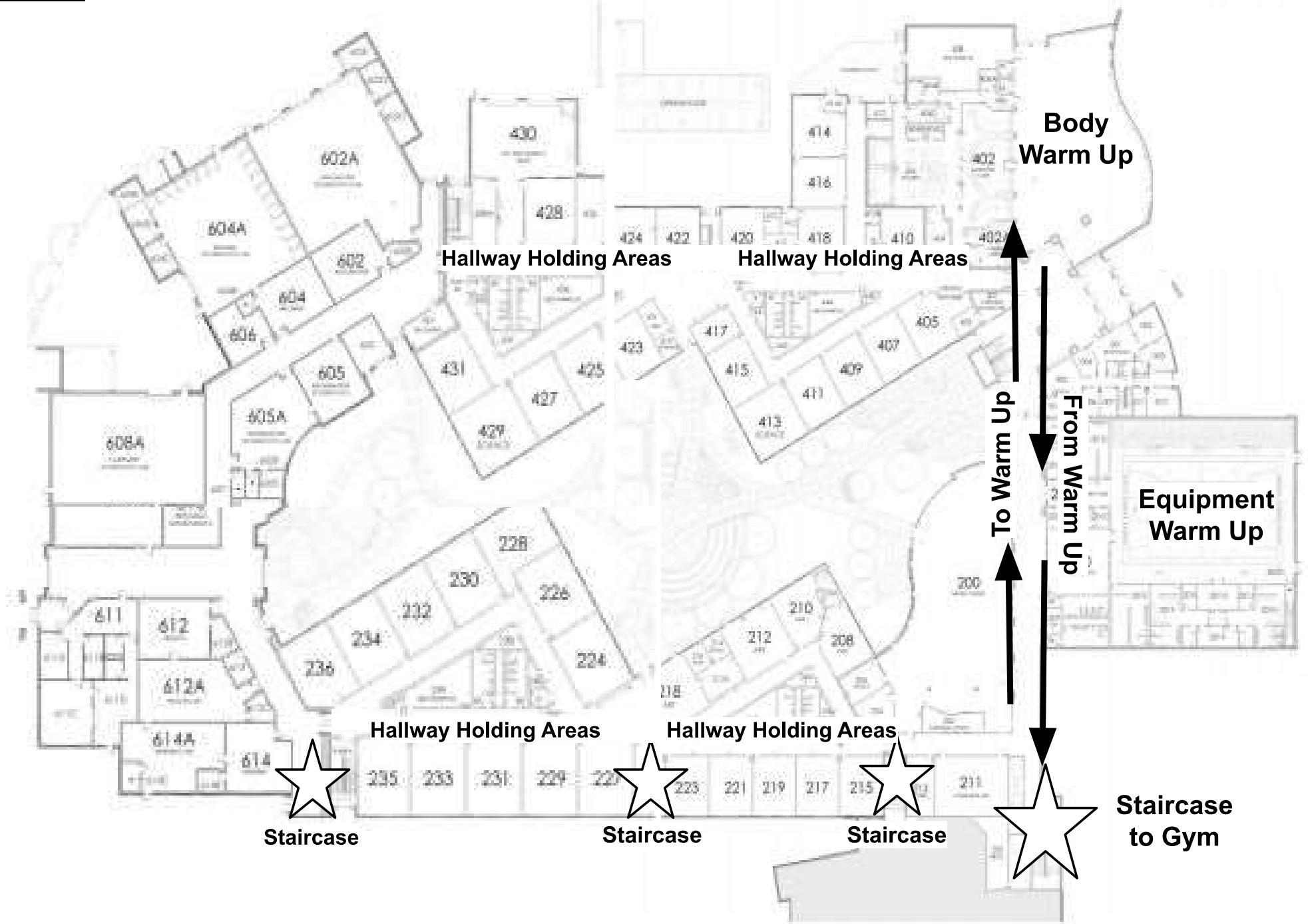
**Props and  
Tarp Storage**

**Staircase  
to Gym**

**Equipment Parking Lot**

**Units Exit Gym  
From Here**

**2nd Floor**



**Body  
Warm Up**

**Hallway Holding Areas**

**Hallway Holding Areas**

**To Warm Up**

**From Warm Up**

**Equipment  
Warm Up**

**Hallway Holding Areas**

**Hallway Holding Areas**

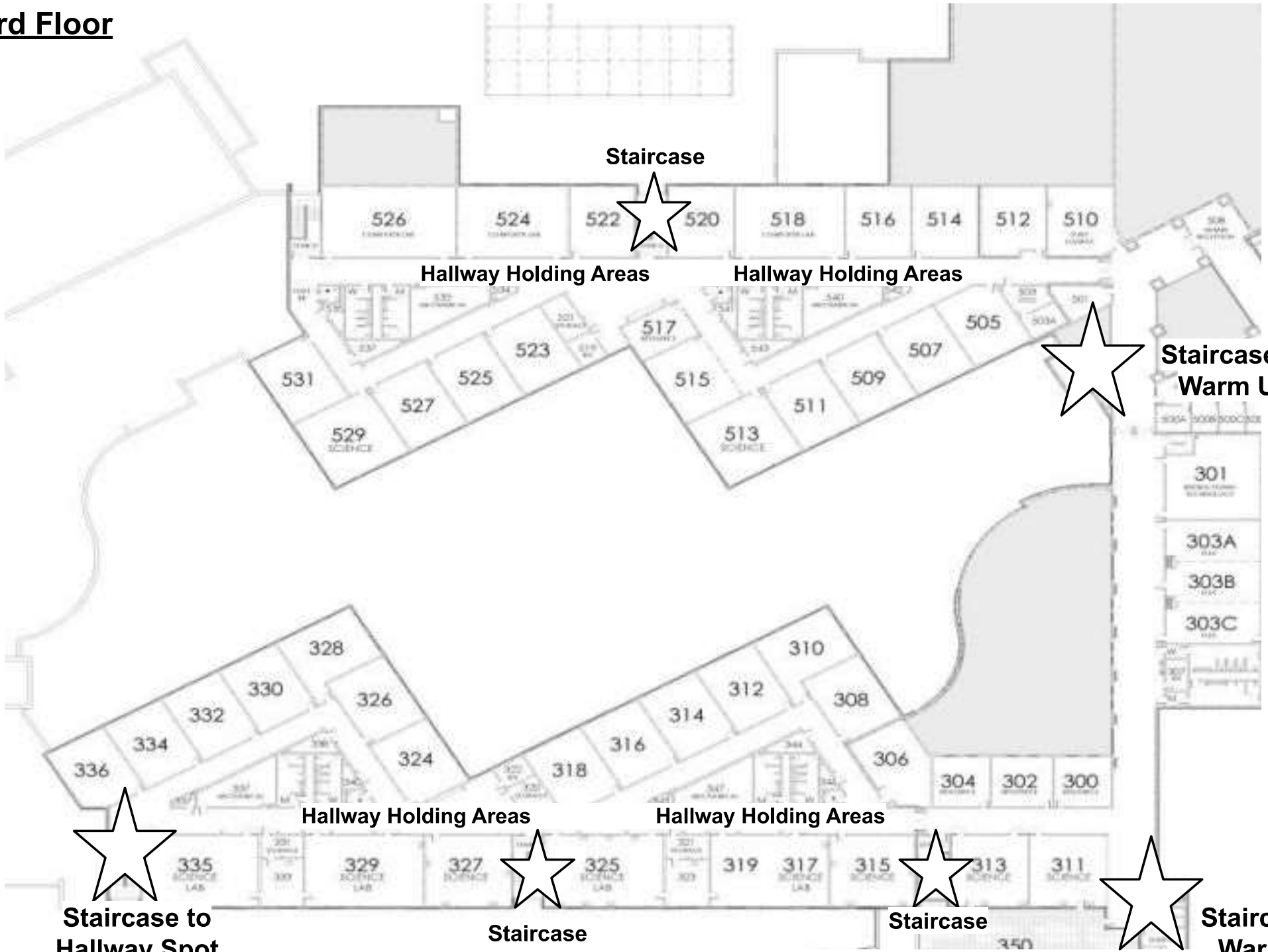
**Staircase**

**Staircase**

**Staircase**

**Staircase  
to Gym**

**3rd Floor**



**Staircase**

**Hallway Holding Areas**

**Hallway Holding Areas**

**Staircase to Warm Up**

**Hallway Holding Areas**

**Hallway Holding Areas**

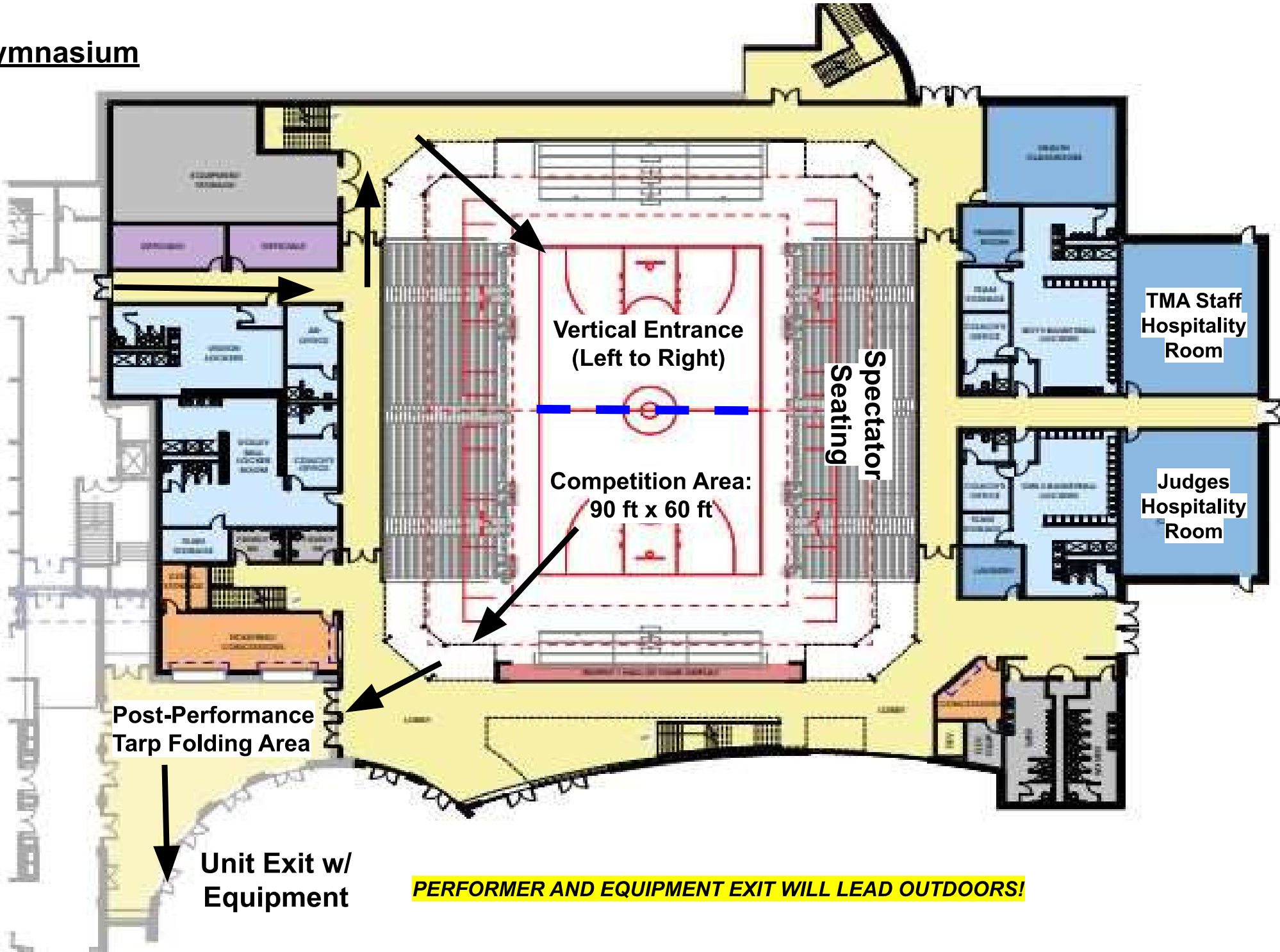
**Staircase to Hallway Spot**

**Staircase**

**Staircase**

**Staircase to Warm Up**

# Gymnasium



Vertical Entrance  
(Left to Right)

Competition Area:  
90 ft x 60 ft

Spectator  
Seating

TMA Staff  
Hospitality  
Room

Judges  
Hospitality  
Room

Post-Performance  
Tarp Folding Area

Unit Exit w/  
Equipment

**PERFORMER AND EQUIPMENT EXIT WILL LEAD OUTDOORS!**



**Body Warm Up**



**Equipment Warm Up**





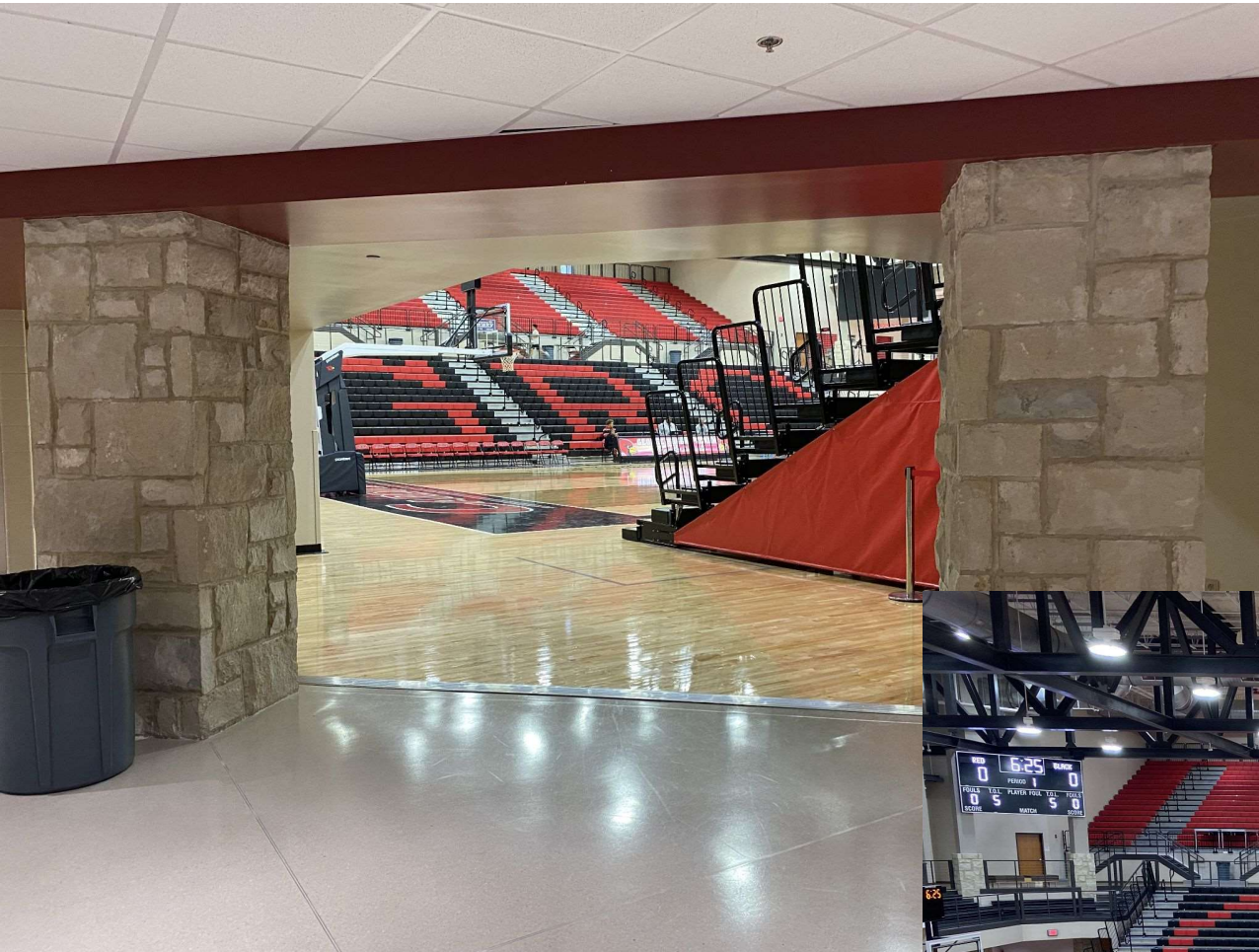


**Equipment Holding Area  
(Tarp, Props, Percussion)**

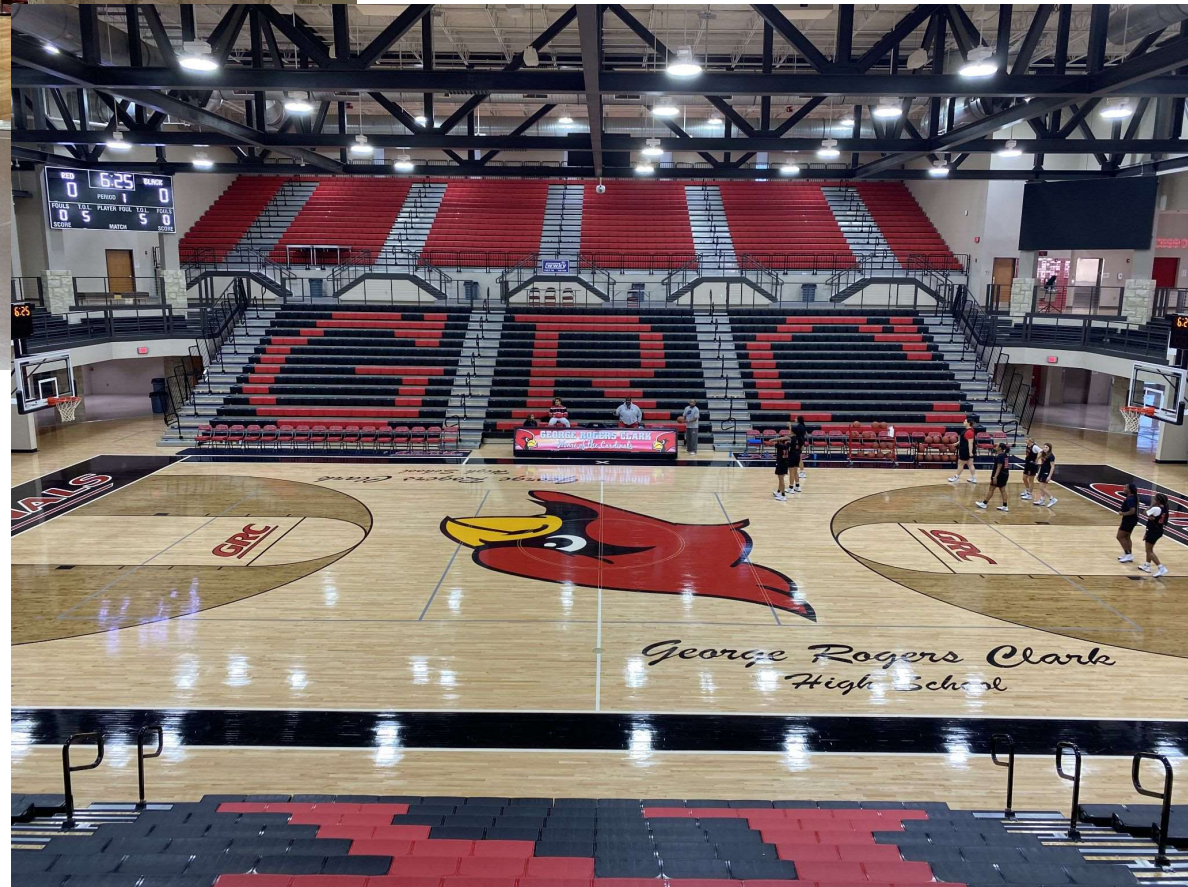


**Tarp Refolding Area**





Performance Entrance to  
Gymnasium



Performer View in  
Gymnasium

