



# TRI-STATE MARCHING ARTS

<b>Place:</b>	Campbell Co HS <a href="#">909 Camel Crossing</a> Alexandria, KY 41001
<b>Date:</b>	February 24, 2018
<b>Time:</b>	10:00AM
<b>Directions</b>	<p>From OHIO: (Northeast) Take I-71 south to the I-471 exit. Travel south until the highway ends into South US 27. Stay on South US 27 through Highland Hts and Cold Spring. Continue on South US 27 into Alexandria. Turn right at the light on W. Lickert Rd. and turn left on old 27 right in front of the school. Turn right into the school entrance. School is at the corner of Old US 27 and W. Lickert Rd. Go past the school and enter on the first driveway on the right off of Old US 27. Unit parking is in the first lot.</p> <p>From Ohio: (Northwest) Take I-75 south taking the Columbia Parkway exit to Ft. Washington Way. This is the highway that runs parallel to the river (You will pass the new Bengals stadium.) Follow the signs to I-471. See above.</p> <p>From Ohio: (East Side) Take 275 West to the US 27 exit. Travel south on US 27 . See above.</p> <p>From Kentucky: Take 275 East to the AA exit (Maysville) Turn right and stay on AA (up the big hill) until the South US 27 exit. Travel South on US 27. See above.</p>
<b>Doors:</b>	Doors will open at approximately at 8:00 AM. Booster sales people from the units that want to display should bring their own tables for use. Please contact show sponsor. Space is limited Contact Nick Little 859-380-2195 or email <a href="mailto:nick.little@campbell.kyschools.us">nick.little@campbell.kyschools.us</a>
<b>Phone Number for day of contest</b>	Nick Little 859-380-2195
<b>Contest director</b>	Chris Thomas 513-235-4981
<b>Admission:</b>	\$9.00 Children 6 and under no charge

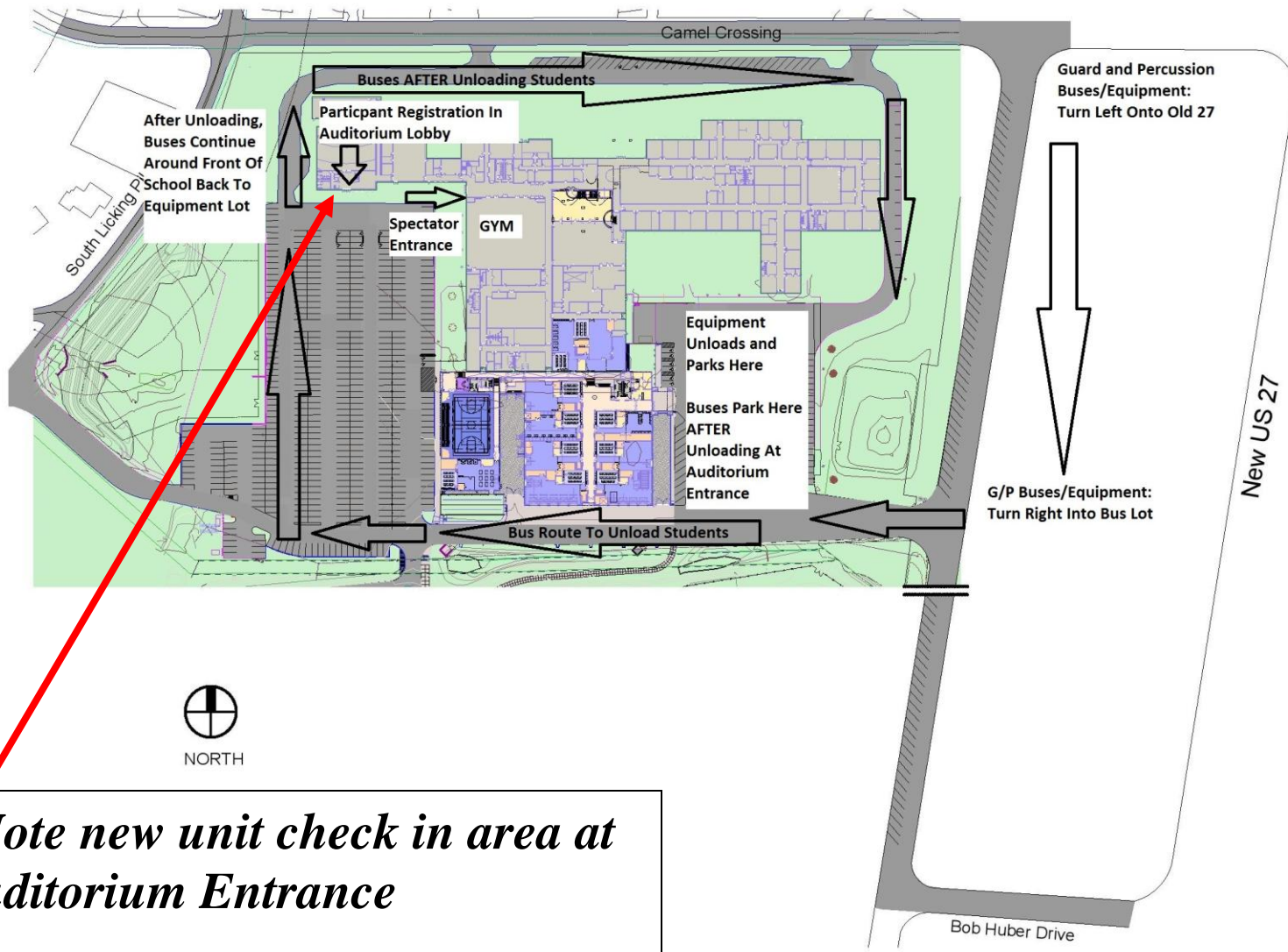
**Unit Managers:** It is suggested that you have your unit sign in together at the designated door. Please turn in your Music at guard check in. Back up CDs are recommended. Make sure all CDs are clearly marked. All Music will be downloaded and used for the whole season. Its responsibility to keep your units music updated

- Upon arrival at a contest, unit managers or representatives are to immediately sign in at the registration desk. Turn in music if not on file. You can access your judges commentary thru [www.competitionsuite.com](http://www.competitionsuite.com). It is optional to turn in a Mp3 or jump drive for judges commentary
- All performing members and ten additional staff members will be admitted at check-in. Each staff person will be stamped for front side. This must be done as a group admission
- All equipment is taken to the assigned area. Make sure to keep your equipment neat and organized in the hallway provided.
- Absolutely no cooking or smoking in any of the buildings that are used for the competition

**Visual Recording:** TriState does not allow video taping of any unit. It is your responsibility to pass this information on to your parents and students.

as of 1/21/2018

[www.tristatemarchingarts.org](http://www.tristatemarchingarts.org)



*\*Note new unit check in area at Auditorium Entrance*

Group Registration      Percussion Warm Up "A" Is In Band Room

ALL Groups Will Enter  
Gym From Concession  
Area

Group Staging Area Will Be In The Academic  
Hallways

Percussion  
Groups  
Warming Up  
In "A" Can  
Unload  
Directly Into  
Warm Up

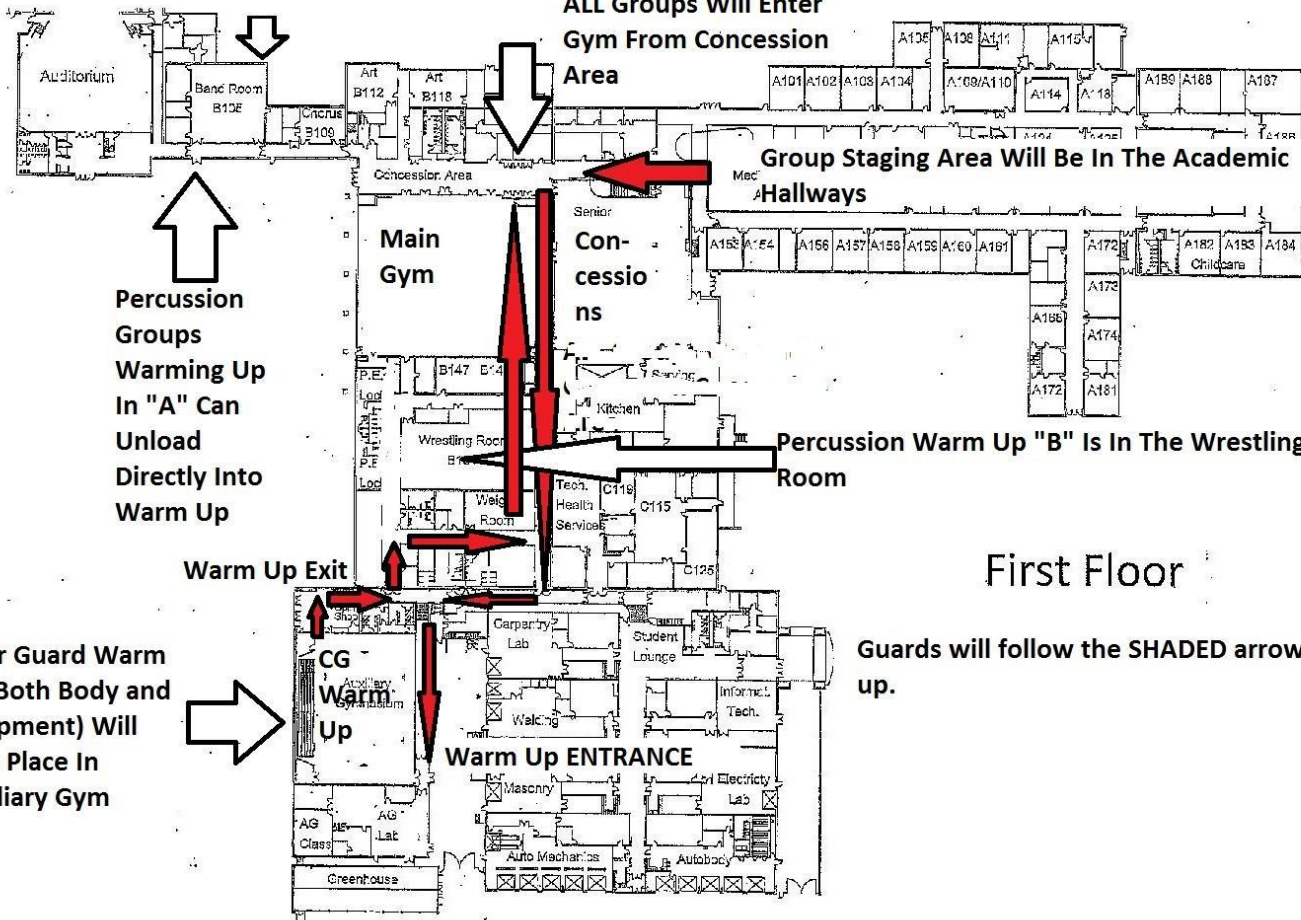
Percussion Warm Up "B" Is In The Wrestling  
Room

Warm Up Exit

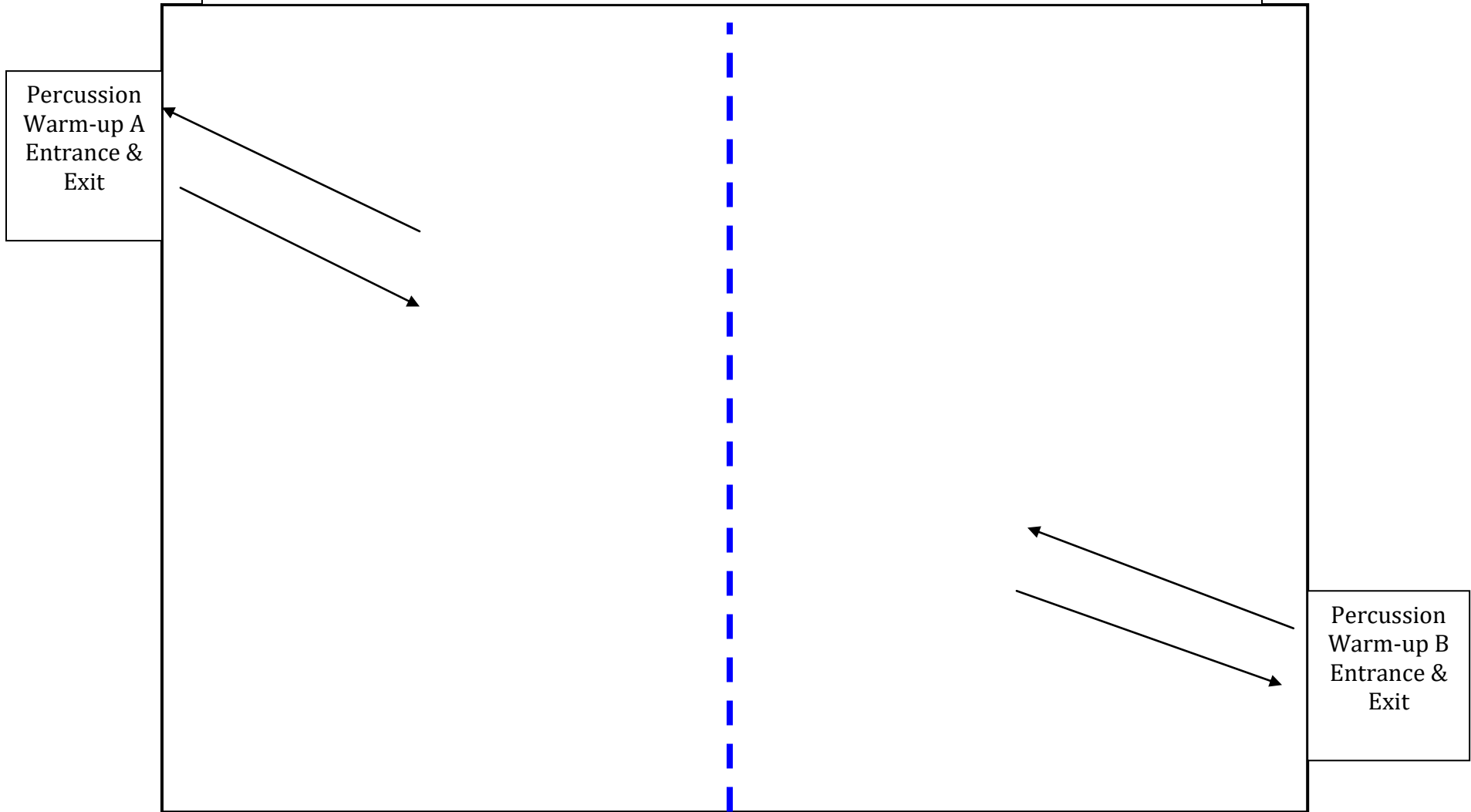
First Floor

Color Guard Warm  
Up (Both Body and  
Equipment) Will  
Take Place In  
Auxiliary Gym

Guards will follow the SHADED arrows to warm  
up.



# COMPETITION AREA PERCUSSION ENTRANCE & EXIT DIAGRAM



COMPETITION AREA GUARD ENTRANCE & EXIT DIAGRAM

